

a o u c e r t s r
t u c r e o r s a
a r r o t u c e s
u o e r s a c r t
artsource
c e r s a o r t u

annual report 2009

Our Vision

Artsource is an exemplary membership and advocacy body for visual artists in Western Australia, that inspires, expands and improves the profile and sustainability of artists and the sector.

Our Purpose

Artsource delivers high quality, core services on behalf of individual artist members and the visual arts sector, in partnership with stakeholders.

Our Services

Artsource services are structured to be relevant, accessible and practical:

Employment Agency – promotes artwork opportunities, jobs for artists and online representation to the wider community.

Regional + Indigenous Development – assists artists to develop their practice and access Artsource services and other arts networks.

Studios + Residencies – provides practical and affordable workspaces for artists across a range of locations.

Professional Development – workshops and seminars on relevant topics for artists, from improving grant application success to marketing, tax and legal issues.

Art Consultancy – assists individuals, government agencies and businesses to develop and coordinate their projects including commissioning, policy work, purchasing and leasing artworks.

Advice – our staff provide direct advice for a wide range of needs, and links to the most up-to-date advice nationally.

Artists access our services via membership, others via Fee-for-Service.

Cover

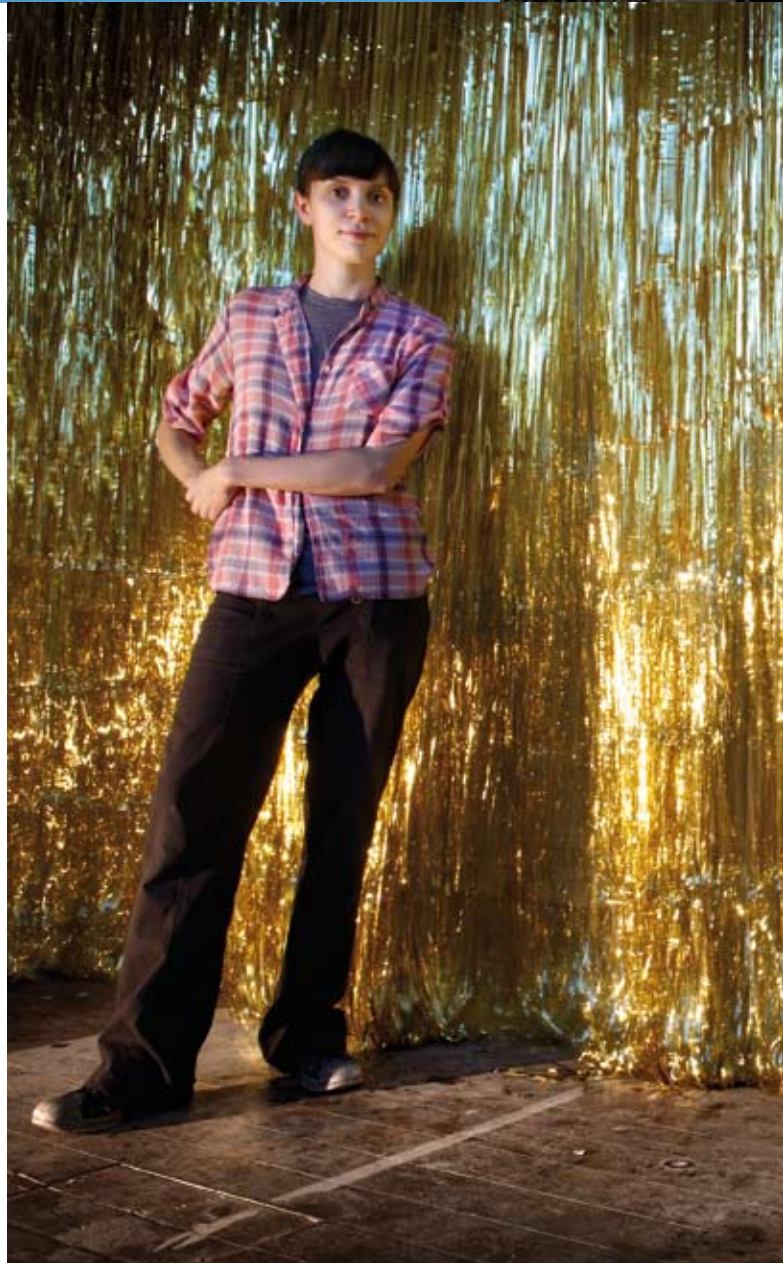
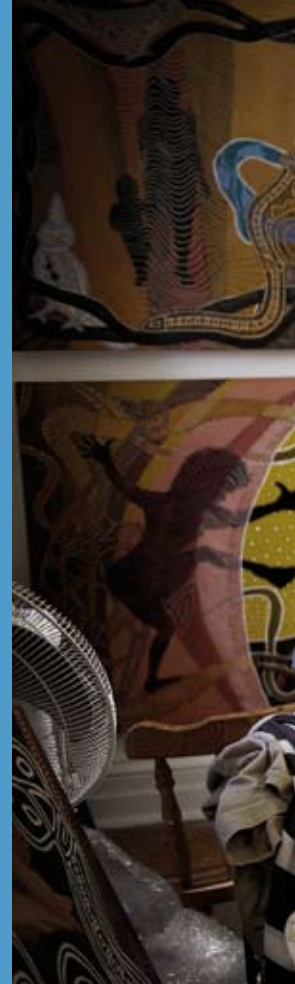
Eveline Kotai, 1 Station St.
Architect: Oldfield Knott

Top Right

Toogarr Morrison,
Fremantle studio

Right

Rebecca Baumann,
SOYA winner 2009
Photos: Eva Fernandez





2009 Highlights

Lifetime Achievement Awards established for Western Australian artists

Rio Tinto three year partnership sustains our Regional + Indigenous Development

New studio building secured in Midland supports 18 artists

New donations fund two more artists to take up residencies

First international commissions confirmed in Abu Dhabi and Singapore

Employment Agency promotes \$17.5m worth of commissions and jobs to artist members

Membership numbers hit 940





Contents

www.artsource.net.au

Our Services.....	2
2009 Highlights	3
Report from the Chair	5
Board of Directors.....	6
2009 Staff List.....	6
Report from the Executive Director.....	7
Membership.....	8
Lifetime Achievement Awards Established.....	9
Studios.....	11
Residencies.....	12
Artist Development – Regional + Indigenous	13
Professional Development Workshops and Talks	16
Art Consultancy – International Projects	18
Art Consultancy – Australian Projects.....	19
ArtLease.....	21
Employment for Artists	22
Sources of Income	24
Directors' Declaration	26
Balance Sheet As at 31 December 2009	27
Income + Expenditure Statement 2009.....	28
Acknowledgements.....	30

Fremantle Office

9am – 5pm
Monday to Friday
Level 1, 8 Phillimore St
Fremantle WA 6160
PO Box 999
Fremantle WA 6959
T (08) 9335 8366
F (08) 9335 3886
freo@artsource.net.au

Perth Office

9am – 5pm
Monday to Friday
King Street Arts Centre
Level 1, 357 Murray St
Perth WA 6000
T (08) 9226 2122
F (08) 9226 2180
perth@artsource.net.au

© Artsource 2010

Designed by zebra-factory.com

Printed by Supreme Printers on ecoStar

Copy Editing by Nyanda Smith

Disclaimer

Unless otherwise stated, all images are published courtesy and copyright of the artist(s). The images and photographs may not be reproduced using any means, without the express permission of the copyright holder.

Top

8 Phillimore Street, Fremantle



Report from the Chair

Graeme Rowley



In spite of fears about financial calamity, another great year has passed for Artsource. In 2009, our income topped \$1.13m, which is an increase of 50% from 2005. By any measure, it is a very commendable outcome.

Through this period we have seen significant growth in the provision of studio spaces, improvement in the content of our professional programs and, most excitingly, have instigated a very positive move into the international marketplace.

Such growth naturally begs the question, 'where to in the next five years?' Where can art continue to influence the culture and development of a rational society? Recently, I was fortunate to attend a dinner hosted by the Chancellor of UWA where Professor Ted Snell was the guest speaker. Ted is not only a recognised artist and art critic but has recently been appointed as Director of UWA's Cultural Precinct. He spoke with great passion about the value and importance of 'design' as a catalyst for innovation.

While I know I would not win a debate on the correct relationship between art and design, I do believe most strongly that they are connected. If Stamford University can promote their Design Program around the premise that 'great innovators and leaders need to be great design thinkers',


...the more we are presented with ideas that test our boundaries, the more we are encouraged to take a leap of faith into a new dimension

then I can pose the view that art has a significant part to play in this process by promoting the interaction of different points of 'view'.

So as I look to the next five years, I see the growing influence of art in encouraging us to 'think outside the box'. This is the process that provides innovative outcomes and the more we are presented with ideas that test our boundaries, the more we are encouraged to take a leap of faith into a new dimension. To me art has always been, and will continue to be, the window to that world which, while imaginable, will only be attainable through innovative design.

Consequently, this year's new Artsource program, to acknowledge the contribution of WA artists through the presentation of Lifetime Achievement Awards, is very appropriate. In this first year, awards went to Hans Arkeveld and Nalda Searles, who have demonstrated excellence through a lifetime of exemplary achievement in their chosen artistic field. Also,

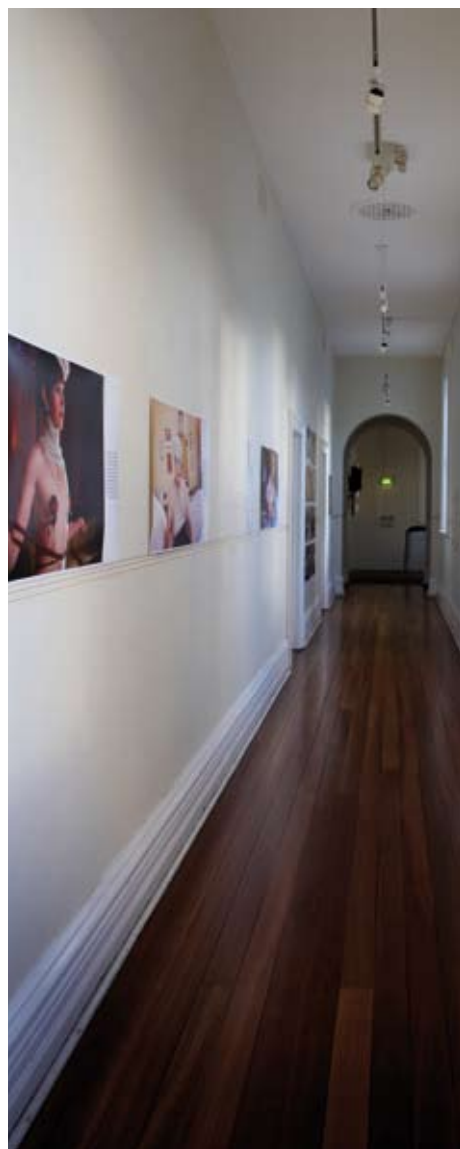
we are moving successfully towards our vision for stronger support for Indigenous and regionally based artists, now housing six Indigenous artists in our studios.

With our membership growing in excess of 56% since 2005, I can only congratulate your Executive Director and her band of dedicated assistants who have achieved so much on your behalf. As we move into 2010, I know your representative body will continue to work tirelessly in your interests, which will be clearly demonstrated by our continuing successes. 

Top left
8 Phillimore Street, Fremantle

Top right
Robert Dorizzi, Midland studio
Photos: Eva Fernandez

Board of Directors



The Artsource Board is comprised of specialists from both the business and arts sectors.

Graeme Rowley – Chair

Executive Producer, Bugle Boy films. Formerly Executive Director, Operations for the Fortescue Metals Group. Graeme has unparalleled experience in the resources sector with many years at Rio Tinto and Hamersley Iron, including directorships at the Dampier Port Authority, Pilbara Development Commission and the WA State Government's Technical Advisory Council.

Anthony Hasluck – Deputy Chair

Managing Director, Clarity Communications. Since 1999 Clarity has been providing integrated communications services to many of WA's largest companies as well as a number of high profile not-for-profit organisations.

Bob Poolman – Treasurer

Director, PSZ Tax Pty Ltd, Business and Tax Advisors. Bob has a long history of providing counsel and guidance for Artsource, arts organisations and artists on taxation issues. He has made significant contribution to the establishment of WA arts organisations including Claremont School of Arts Foundation, PICA and the Chrissie Parrott Dance Collective.

David Doepel

Director of the Research Institute for Resource Technology at Murdoch University. David was brought up in Perth, studied and worked in the USA and has now returned to WA. He has previously served as a Principal Policy Adviser

to the Hon. Alan Carpenter Premier of WA and as Regional Director for the Americas, for the Western Australian Trade and Investment Office.

Kristi Chua

With a background in public service, specifically in human resources, Kristi is passionate about furthering the employment of Indigenous people and promoting opportunities for the Indigenous community at large. She is also passionate about Indigenous Art, with her running of an online store and blog satisfying her creative needs.

Geoff Overheu

Practicing Artist. With a background in mining and agriculture, since 1999 Geoff has studied art gaining a Masters in Fine Art and is currently completing a PhD at UWA. His work has been exhibited in several national, group and solo exhibitions across Australia, has won awards and can be found in both public and private art collections.

Fleur Schell

Practicing ceramic artist, lecturer and Director, SODA PTY LTD, the premier Ceramics Workshop Centre and International Ceramics Residency Program. Fleur trained at Curtin University and achieved First Class Honours in ceramics at the Hobart School of Art in Tasmania. Her work is highly acclaimed internationally, has won numerous awards and can be found in both public and private art collections locally and internationally. [a](#)

2009 Staff List

Jude van der Merwe

Executive Director

Yvonne Holland

General Manager

Jenny Kerr

Manager Client Services

Ron Bradfield Jnr

Manager Regional + Indigenous Artist Development

Sophia Hall

Manager Studios + Residencies

(resigned August 2009)

Loretta Martella

Manager Studios + Residencies

(appointed September 2009)

Carola Akindele-Obe

Manager Marketing

Louise Morrison

Art Consultant, Client Services

Rebecca Thompson

Accounts Officer

Marc Springhetti

Coordinator Membership Services + Administration

Tom Freeman

Coordinator Client Services (resigned May 09)

Jennifer Chandler

Coordinator Membership Services (until May 09)

Coordinator Client Services (from May 09)

Clare Peake

Coordinator Membership Services

(appointed August 09)

Report from the Executive Director

Jude van der Merwe



The year started amid considerable caution. Concern for our members' capacity to endure a slowdown in gallery sales, commissions, workshops and other sources of valuable income caused us to make very moderate predictions for the next 12 months. We focused on maintaining membership fees at 2008 levels and began turning over rocks, exploring new options and looking for more ways in which to support WA artists.

The answers began to flow in readily with the location of a potential commercial building in the heart of Midland suitable for affordable studio spaces, allowing us to increase our studio program. We established funding with the aim of supporting artists to take up residencies of their choice; which in its first year supported the international exploratory trips of two artists.

We reshaped our professional development program, and offered a new critical writing course for 10 artists/writers. The purpose of the professionally mentored six-month course was to invest more people with the skills and confidence to write for a range of publications about contemporary art practice. We also hosted visits from the 2010 Biennale of Sydney Director David Elliott and Singaporean public art curator Swee Lin Tay who both met with artists, in studios, and local curators.

In this report we have taken the opportunity to reflect not only on the year, but to demonstrate the changes that have occurred over the previous five years

The exciting news was that our membership hit an all time high of 940. The significant factors that influenced this were the appeal of the insurance protection offered through our MAX membership and growing awareness that our services are useful and worthy of support. Our previous work in establishing an international marketplace for WA artists began to bear fruit with seven Australian artists achieving commissions for significant works in the Middle East and Singapore.

Our ongoing work with regionally based and Indigenous artists continued, with the main focus in the West Pilbara, working with the Yinjaa Barni Arts Group and the Roebourne Arts Group. This was made possible through our partnership with Rio Tinto Iron Ore, a company that has made a long-term cultural investment in artists' development. The quality of the works made by these artists continues to impress.

As part of our ongoing strategic planning, we undertook an internal review of our core programs in order to establish their capacity to serve our membership and overall effectiveness. This has produced a strengthening of our Art Consultancy and Employment Agency services that are currently rolling out in 2010.

Many thanks to our generous and talented Board who together provide Artsource with strong governance, a clear direction and wise advice; and to our staff who work extraordinarily hard on behalf of the visual arts sector in this state. ☺

Opposite
8 Phillimore Street, Fremantle

Top left
Artsource staff at Midland studios. Photo: Neil Wallace

Top right
Visiting curator Swee Lin Tay with Tony Jones



Membership

Membership numbers
have increased by
76% since 2005

Artsource aims to provide relevant and affordable services to meet the variety of needs of visual artists across the practices and mediums, from recent graduates through to veteran practitioners. Our three membership tiers offer our wide membership the ability to choose the one that suits them best.

We are happy to report in 2009 a positive growth in membership – rising to an all time high of 940 members. This is a 76% increase up from the 532 members that we had back in 2005.

ARTSOURCE ACCESS

Offers a subscription to quarterly newsletter, access to resources, programs, studios and residencies, as well as discounts on workshops, publications and art supplies. Suitable for artists, art workers, students, organisations.

Annual Fee 09: Individual \$55.00, Art Student Concession \$24.00, Organisation \$125.00

ARTSOURCE PLUS

Includes all the benefits of ACCESS plus real income earning opportunities and a continual profile on our online database. Suitable for professional visual artists.

Annual Fee 09: \$125

ARTSOURCE MAX

Is a full package of benefits, which added \$10m* public liability insurance and free workshops to both the ACCESS + PLUS memberships. Suitable for professional visual artists.

Annual Fee 09: \$230

See www.artsource.net.au for a full list of membership benefits.

Top left

Jennie Nayton at Art Sydney

Top middle

Indra Geidans, *Threshold*.

Winner of the City of Albany Art Prize 2009

Top right

Brendan Van Hek, *Yellow Composition #1*.

Winner of the City of Joondalup

Acquisitive Award 2009

2005
532

2009
940

* increased to \$20m in 2010.



Lifetime Achievement Awards Established

2009 awarded artists: Hans Arkeveld and Nalda Searles

Until 2009, WA's visual arts industry had no formal system to acknowledge significant contributions that specific individuals make over a lifetime, a concept well established in others sectors.

It was clear to Artsource that such a system was well overdue, and on 27 May 09 we launched the *Artsource Lifetime Achievement Awards for Visual Artists*. The inaugural event paid tribute to two artists who have made considerable contribution to the arts and culture of the state.

An enthusiastic throng of artists and guests gathered in Perth to celebrate, as the Governor of Western Australia, Dr Ken Michael AC, presented the Awards to Hans Arkeveld and Nalda Searles.

Dr Robyn Taylor and Linda van der Merwe paid tribute to Hans and Nalda respectively, illustrating the artists' constant commitment, integrity and excellence in the development of their art practice over the last 40 years, and the generous sharing of their knowledge with so many – students, artists and communities here and internationally.

It was a momentous event made even the more memorable by Coral Lowry's custom designed award trophy, badges of Hans' artwork, and grass brooches handmade by Todd Israel worn by guests in honour of Nalda.

The Awards will be granted annually to artists who have demonstrated a sustained practice achieving excellence in their chosen field for over 20 years. The practice can be derived from any aspect of the visual arts. In the first two years, the Award/s will be determined by the Board through an internal nomination and discussion process with arts industry leaders and senior staff. We see the Awards as just one way to advance the profile of visual artists and to develop greater professionalism and pride within the sector. ☺

"Hans' artworks exhibit finely honed skills – his sculptures of the human body, the beautiful draughtsmanship of his drawings. It is not surprising that his art is often compared to the Renaissance genius of Leonardo da Vinci."

"Hans holds an honorary position as resident artist at the School of Anatomy and Human Biology at UWA. Hans has literally integrated art into the corridors and stairwells ... he helps to keep medical science within the social context of life in all its complexities."

"What Hans has done in his long career and life as an artist is bring human understanding and respect for the beauty of life."

Dr Robyn Taylor on Hans Arkeveld

"Art is her religion of choice, it is the tie that binds and friendships are deeper for it. In all her amazing art accomplishments, Nalda never forgets people, she weaves us all in."

"She is not only a maker of art but a maker of friendships; she weaves us together to make a textured singing piece. There is no single strand history. It is a full yarn. She is not only artist, educator, mentor to so many ... but our Nalda!"

Linda van der Merwe on Nalda Searles

Top left
Dr Robyn Taylor with Hans Arkeveld

Top right
Linda van der Merwe with Nalda Searles
Photos: Chris Huzzard



Studios

2005
242009
60

In 2009, Artsource fostered new partnerships to secure relevant and affordable spaces for artists to establish and develop their studio practice. Adding to the now well established Artsource Fremantle spaces, we developed two new and distinct initiatives – Artsource Midland and industrial workspaces on Newcastle Street, Northbridge. These new spaces brought the total number of studio complexes managed by Artsource to ten – enabling 60 studio spaces to house 63 artists across the varying art practices. This is a 161% increase on the 23 spaces managed by Artsource in 2005.

Artsource Fremantle

Artsource Fremantle has continued to be the benchmark for artist studios in the metropolitan area, offering 5 year tenure to 27 artists. This year was no exception with a range of artists filling the studios working across the art practices. Artsource's support of local arts organisations also continued, with Bizircus, Nova Ensemble and the WA Circus School being housed in the building too. The annual Open Studios event again offered members of the public to sneak a peak into the artists' studios and coincided with the *Fremantle Festival* weekend.

2009 Artists

Nicole Andrijevic	Angela McHarrie
Stephen Armistead	Toogarr Morrison
and Lia McKnight	Laurel Nannup
Rebecca Baumann	Clare Northend
Jacinda Bayne	Alwin Reamillo
Tim Burns	Tanya Schultz
Rachel Coad	David Turley
Richard Coldicutt	Peter Wales
Clare Davies	Annie Hsaio-Wen Wang
Ian De Souza	Carol Wells
Dan Gladden	David Whish-Wilson
Chris Hopewell	Caitlin Yardley
Francis Italiano	

Artsource Midland

A new partnership has been developed with the owners of the former 'Connolly's Building', a sprawling boarding house built in the early 1900s, located in the centre of Midland. In response to the strong demand for artists' studios in the Swan area and surrounds, Artsource Midland has been established to offer affordable working spaces to both emerging and established artists of various art practices, as well as an artist-run studio shop-front.

Top

Melanie Diss, Midland studio. Photo: Eva Fernandez

Middle L-R

Dan Gladden, Fremantle studio. Photo: Justin Spiers
Marzena Topka, East Perth studio. Photo: Eva Fernandez

Bottom

Belmont Studio, Garvey Park. Photo: Eva Fernandez

The new spaces brought the total number of studio complexes to ten – enabling 60 studios housing 63 artists...

In 2009 the studios serviced 13 artists from across the metropolitan area, encompassing the City of Swan, along with Highgate, Mount Lawley and North Perth, reinforcing the need for affordable, professional studio spaces for artists.

Studio tenants have been offered five-year tenure and work across artistic mediums – including painting, sculpture, textiles, installation, drawing, design, jewellery and printmaking, as well as a writer's studio.

2009 Artists

Devina Abeyasinghe	Narda McMahon
Denise Brown	Ben Mitchell
Melanie Diss	Dean Moyes
Robert Dorizzi	Philippa O'Brien
Peter Farmer	Holly Pepper
Jessica Jubb	Sussi Porsborg
Graeme McCullagh	Greg Pryor

Newcastle Street, Northbridge

The demand for inner city studio spaces continues to grow as the city further gentrifies. In an effort to provide large and affordable industrial spaces, Artsource embarked upon a partnership with a lease-holder in an expansive warehouse on Newcastle Street. Six artists were housed in the space from September 2009, until the owners decided to demolish the building in February 2010 to make way for a new development. Despite this set-back, we developed strong relationships with the artists concerned and will continue to work on initiatives for affordable studio space in and around Perth city.

2009 Artists

Aidan Broderick	Bennett Miller
Jack Constantine	Andrew Stumpf
Darius Kowal	George Warbuton

Amherst Street, East Fremantle

A 675sqm shed located in an industrial area in East Fremantle. Artsource was offered the use of the space in 2008 until it is demolished for development, date yet unknown.

2009 Artist

Lucy O'Dea

Garvey Park, Belmont

Through a partnership with the City of Belmont a former converted kiosk perched in the centre of a park overlooking the Swan River, provides a picturesque studio surrounded by stunning bushland.

2009 Artist

Jilalga Murray-Ranui

Haig Park, East Perth

A Foundation Housing accommodation complex in East Perth offers four studios. This partnership has been in place for nine years and also includes two residential apartments for the studio artists.

2009 Artists

Peter Campagna	Marzena Topka
Connie Petrillo	Rizzy

Henderson Street, Fremantle

A partnership with the City of Fremantle and the Department of Housing and Works continued to present a unique studio space, tucked away behind the Fremantle Markets, right in the heart of the Port City.

2009 Artist

Anthony Krause

Kelmscott

A house and two large sheds owned by the Armadale Redevelopment Authority. The ARA offered Artsource the use of the property in 2007 until the scheduled development proceeded and the house was demolished. This was due to take place in 2009, however the development has been deferred and our tenure continues.

2009 Artists

Bevan Thompson
Armadale Society of Artists

Ocean Gardens, City Beach

A large workroom space in the middle of a retirement village. This partnership with the Ocean Gardens Retirement Village has been in place since 2006 and continues to provide an interesting mix of personal studio plus interaction between artists and the residents.

2009 Artists

Olga Cironis
Tim Garrity
Julie Goldenberg

Settlers Cottage, Churchlands

The historic cottage on the banks of Herdsman Lake is home to three artists, made possible through an award-winning partnership with the National Trust since 2007.

2009 Artists

Tanya Brown
Margaret Edwards
Gail Leidich

Residencies

Artsource continued to provide opportunities for WA artists to undertake residency programs across the globe. Along with the well established Basel and Sydney residencies, Artsource raised funds through private donations to establish a new artist-initiated residency opportunity. Our sincere thanks to all our donors!

The Fremantle and Henderson Street residencies continued to be enjoyed by artists hailing from regional WA, interstate and beyond.

Artsource Residency

Artsource announced new \$20,000 residency funding for WA visual artists.

The Artsource Residency program was injected with energy by the announcement of its new Residency Fund. Artists leapt at the chance to apply for the new 'no strings attached' residency monies which allow artists to choose what will be most beneficial in developing the next stage of their art practice and to follow their dreams outside the prescriptions of more formal residencies – to go wherever they want for whatever they want!*

Albany printmaker Kati Thamo received \$19,200 for a research trip exploring her heritage in Hungary, Transylvania (Romania) and Poland. Kati's work enshrines traditional fable and myth with a contemporary twist of joyful, irreverent humour.

Gaining this residency is a truly wonderful opportunity, allowing me to undertake a kind of 'pilgrimage' to Eastern Europe. It's been a long-standing desire of mine to travel to Transylvania, to track and trace family history and to see the landscape behind the intriguing tales I heard throughout my childhood. I intend to use this as the research basis for a new body of work balancing imaginative retellings of past events with my own personal journey and experiences.

Artists awarded in 2009 for 2010 residencies:

Kati Thamo – Eastern Europe
Tanya Schultz – Japan



Basel, Switzerland

The exchange partnership between Artsource and the Christoph Merian Foundation in Switzerland celebrated 20 years in 2009. Tom Müller was selected as the WA artist to reside in Basel for six months, while the Artsource Fremantle Residence housed Swiss artist Claudio Rasano. This well established cross-cultural exchange continues to offer inimitable experiences for artists from both countries. The Basel residency is supported by the Department of Culture and the Arts, with a \$26,000 grant.

Artist 2009

Tom Müller

For Tom Müller, the opportunity to be based in his birthplace of Switzerland, offered a key experience for him to exhibit and collaborate with other artists, with immediate plans to further collaborate and exhibit in Europe.

I believe this residency has been a key year in my practice. It has allowed me to question, contrast and liberate my practice in so many ways. Before we left I did feel a little stuck with the work I was undertaking, the change of environment has been immensely beneficial and I am grateful for that.

What really works is the temporary dislocation from your usual environment into a completely new, foreign environment where so much about your life, work, directions... is questioned, allowing to make a fresh start. That, I think is really important and refreshing.

Tom Müller, 2009 Basel Residency Recipient

Artspace, Sydney

A \$7,000 grant from the Department of Culture and the Arts accompanies this residency, enabling an artist to spend three months in Sydney. 2009 marked 15 years of the residency, where an artist is provided the use of a studio at the Artspace Visual Arts Centre, at The Gunnery complex, in the Woolloomooloo arts district.

Artist 2009

Gian Manik

For Perth artist Gian Manik, soaking up the artistic and cultural aspects of Sydney provided a productive new environment. He describes the ability to exhibit and focus on creating new work in this environment, as one that allowed him new experimentation.

As a maker straddling various discipline, having the added studio and living environment allowed me to spread out through media, space, and most importantly the time to create the work, sometimes in the middle of the night. This space and grant also allowed me to dedicate my time as a paid artist, so it was great to have the luxury to think, make and buy materials; for work to be exhibited, idea testing and play.

Gian Manik, 2009 Artspace Sydney Residency Recipient

Artsource Fremantle Residence guest artists:

Claudio Rasano (Switzerland)
Kathy High (USA)
Emily Strange (UK)
Didier Theron (France)
Pauline Goggin (Ireland)
Henderson Street Residence guest artists:
David Elliott (NSW)
Jason Sweeney
Perth Centre for Photography
Tania Spencer (WA)
Greg White (WA)
Kirsten Rann
Aoife Miskella (Ireland)
Diana van der Harst (The Netherlands)
Andrea Isaac (WA)
Anne Copeman (WA)
Jigsaw Theatre Company (ACT)
Cate Collopy
Pauline Goggin (Ireland)
John Mayo (USA)

2005
2
\$24,000

2009
4
\$41,000

* Artsource Residency applicants must have in excess of five years visual arts practice and can apply for a residency that meets their need for professional development, networking, attendance at a key event, or pure artistic inspiration either nationally or internationally. To allow the greatest possible creative development there are no compulsory requirements or restrictions, other than sharing some tales about what happened with the Artsource community on their return to WA.

Top

L-R: Successful residency applicants; Mark Parfitt, Kati Thamo, Tanya Schultz, Rina Franz



Artist Development – Regional + Indigenous

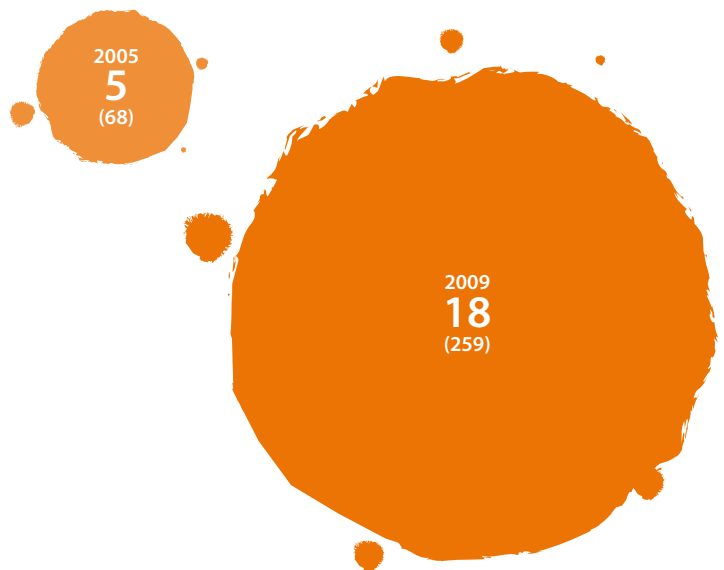
Words by Ron Bradfield Jnr

Regional + Indigenous Development this year stretched all the way from the Pilbara to the Greater Southern regions of WA. Artsource delivered skills development workshops in Roebourne and Tom Price; discussed studio spaces in Karratha; arts opportunities in Karajini; delivered skills and professional development in Geraldton; and assisted artists with wills in Perth, Katanning, Mt Barker and Albany.

One-on-one support continued with a marked increase in the number of non-Indigenous members seeking to work with Indigenous members on joint projects. This included connecting artists to appropriate Aboriginal bodies and individuals when developing ideas, concepts, content and any potential meanings or misunderstandings. As if by design, there was also an increase of Indigenous artists seeking similar advice about their non-Indigenous counterparts.

Back in town we are delighted that six Indigenous artists are leasing studios, where only 5 years ago we had none. ☺

Regional + Indigenous Workshops



RioTinto

healthway

Relationships Australia
AUSTRALIAN COUNSELLING

Our artists development work in the Pilbara is made possible through our partnership with Rio Tinto. All other regional artist development work has been made possible through Healthway and Relationship Australia.

Top
Jilaga Murray-Ranui,
Belmont studio
Photo: Eva Fernandez



One little telephone call, introduced these artists to the world of International Fashion...

From little yarns, big ideas grow...
My apologies to Paul Kelly and Kev Carmody for borrowing their song title some, it's just that the notion of such a concept fits particularly well for Regional and Indigenous Artsource members over the past year. That's the funny thing about *yarning* (speaking with each other) see – you never truly appreciate the *distance* a little yarn can take you. A small word in the ear of one person here in Perth, grows into this remarkable opportunity and, before you know it, this produces some of the best success stories you're ever likely to hear.

Here are some of the highlights:

Antipodium and *Ab Fab*

It was Department of Culture and the Arts that pointed Geoffrey Finch and Fenella Peacock from fashion label Antipodium in our direction last year. They had an idea, but didn't know who they could take it to. A little more *yarning* saw Antipodium connecting with mostly Geraldton

Top left
Roy Merritt for Antipodium and *Ab Fab*

Top right
Athol Farmer, Katanning, made a will with advice from Arts Law – Artists in the Black

Aboriginal artists and, after much deliberation they commissioned works that then took part in the London, Paris and Sydney summer fashion show last year. *Ab Fab* was a fantastic hit! Our congratulations go to Barbara Merritt, Roy Merritt, Ruby Mackintosh, Nikki Dickerson and Manapa Butler, our regional coordinator Sonja Parmenter, Yamaji Art, the artists themselves and the crew at Antipodium who all worked tirelessly to make this happen. One little telephone call, introduced these community artists to the amazing world of International Fashion.

Arts Law – Artists in the Black – Artist Wills for Aboriginal Artists

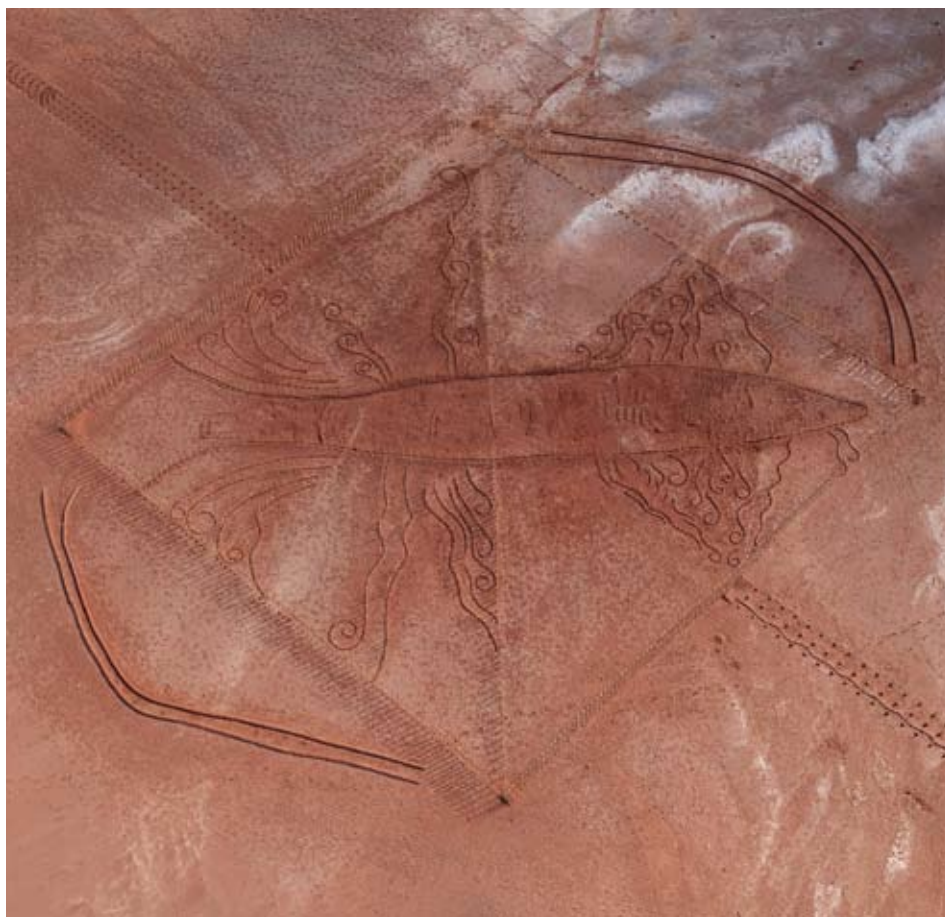
The issue of artist wills still remains an extremely important part of Aboriginal visual artists' professional development in WA. The *WA Act* that determines the right of our next-of-kin to claim assets associated with their immediate family, prevents Aboriginal people from doing this in the same way that non-Aboriginal people might do. Delwyn Everard and Brad Webb from Arts Law spent a week developing over 18 wills with mostly Nyoongar artists. More needs to be done to assist Aboriginal artists in WA in this area, so both Artsource and Arts Law will continue our work on this front.

Aboriginal Artists in Artsource Studios

Toogarr Morrison, Laurel Nannup, Jilalga Murray-Ranui, Peter Farmer, Vanessa Russ and Bevan Thompson occupied 10% of our studios throughout the metro area. For an arts organisation that up until 2004 had not one of its Aboriginal members in their studios – this is a fantastic milestone. Artsource determined in 2004 that it would seek to provide opportunity to Aboriginal artists in the same way it did for all other visual artists who are seeking to professionalise their arts practice and develop their visual arts career. The diversity of art practices between these artists goes to show the importance.

2005
2

2009
6




Profile Raising of Pilbara Artists – Ric Spencer visits Yinjaa Barni and Roebourne Art Group Artists

Hidden away in Roebourne are two very exciting art centres that continue to grow some highly respected Pilbara artists. Thanks to Rio Tinto, we were able to use the 2009 Cossack Art Awards to introduce Dr Ric Spencer, art critic for *The West Australian*, to the prodigious talent that can be found here. It's a sad thing indeed when all you hear about a place is the bad news associated with it. What we should hear about Roebourne is how incredibly talented and dedicated the artists and their centre managers

are to their own arts practice. This is paying huge dividends for both groups as they attract the eye of more people in the main stream visual arts industry. These artists are raising the bar in their arts practice and Artsource looks on with a sense of barely containable anticipation.

Arif Satar and Audrey Fernandes-Satar in Karratha and Roebourne

Both artists were looking for an opportunity to connect with local Ngarlama peoples in Karratha, so they could enrich their cultural approach to the public works they were installing at the local TAFE campus. One thing led to

another and before we knew it conversations were running back and forth about the possibility of ephemeral works in the lead up to the 2009 Cossack Art Awards. What you see here is the result of a collaboration between the artists, Ngarlama elders, the Shire of Roebourne, local community people, school groups and a plethora of other interested people. The Ngarlama Mob had determined that the story should be about the fish, as this is what connected all those who visited the 'Claypans' to this area. Arif and Audrey's vision brought about a stunning set of ephemeral works which nature will claim back – in her own time. 

Top left

Ric Spencer with Yinjaa Barni Arts Centre artist
– Cossack Art Awards 2009

Top right

The Claypans Project Aerial Image. Photo: Mervyn Coutinho

The Regional + Indigenous Artist Development Program is dedicated to providing regional and Indigenous artists with opportunities to develop a successful art practice. Overall the program aims to ensure that sufficient visual arts knowledge, interest and skills are developed and remain within the community, ensuring continuity and growth of the sector. Artsource does this by developing and maintaining relationships between artists, local government and the private sector.



Professional Development Workshops and Talks

In 2009 Artsource provided new professional development initiatives in the metropolitan area:

The 6x6: Meet the Artists 1, 2 and 3 talk series presented eighteen WA artists who provided six minute talks about their art practice in general, or on particular projects they were working on. Audience participation was central, with lots of questions and much enjoyed networking taking place.

With much discussion in the visual arts sector about a lack of critical arts writing here in WA, Artsource ran *The Crit and the Dead* course, geared towards providing prospective arts writers professional training. Running for six months, arts writer Ara Jansen mentored the writers through a monthly session providing them with writing exercises to produce media-ready copy. A select group of industry professionals offered constructive criticism on writers' copy and gave presentations at each session about different aspects of the arts media.

Public Art Month, in liaison with *Sculpture by the Sea*, offered a series of talks, forums and an examination of case studies.

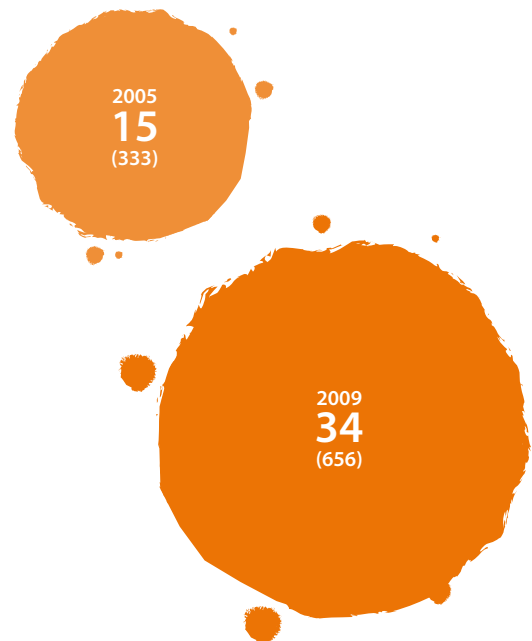
The annual Artsource Industry Night showcased new materials and technologies for artists with a presentation by Edward Khoury from Form Designs Australia, a local industrial design company who work with translating artists' ideas into 2D and 3D forms.

The Workshop program is tailored to artists' needs with the goal of enhancing artists' ability to earn income from their art practice...

In 2005 we held 15 workshops with 333 participants which grew to 34 workshops with 656 participants in 2009, in metro and regional WA.

The Artsource Workshop Program is tailored to artists' needs with the goal of enhancing their ability to earn income from their art practice. Topics regularly covered include funding, exhibiting, documentation, promotion and marketing.

Experts and experienced artists are invited to present at each workshop to provide practical advice and real life experiences. Registration fees are kept to a minimum and the atmosphere is generally informal – so it's good for networking too. ☺



Top left

Getting your Work Out There, a workshop about connecting with galleries, online marketing and other exhibition opportunities, King St Arts Centre, June 09. (Background: Rodney Glick, *Boom*, 2007)

Top right

Jon Tarry, *Anchorage*, Sculpture by the Sea, Cottesloe, aluminium and concrete, 3m x 2m



Professional Development – Perth + Fremantle

Topics covered include: Documenting Artworks and Introduction to Digital Asset Management; Processes and Protocols of Commissioning Public Artworks; Public Art from Idea to Installation – for Artists, New Materials and Technologies for Artists; Getting Your Work Out There: Gallery Relationships, Exhibiting, Touring and Marketing Yourself; Writing about Art for the Media; Artist Residencies

Guest speakers and companies included: Malcolm McGregor, Robert Frith (Acorn Photo Agency), Ara Jansen, John McDonald, Stephen Bevis, Danielle Barrass, Patrick Cornish, Thelma John, Axol Arnott (Sculpture by the Sea), Lisa Green (Art on the Move), Edward Khoury (Form Designs Australia), Fibreglass and Resin Sales, Engineering Technology Consultants, George and June Framing Services, Matt Edmonds Metal Fabrication, Copy Ads Photo Engravers, Interface Creation, International Art Services, Resilient Flooring

Artists talking included: Claire Davies, Caspar Fairhall, Jeannette Rein, Felicity Peters, Sarah Elson, Perdita Phillips, Geoffrey Overheu, Olga Cironis, Angela McHarrie, Janine McAullayBott, Lesley Munro, Peteris Ciemetis, Pippin Drysdale, Leah Tarlo, Neil Aldum, VJzoo (Kat Black and Jasper Cook), Ron Nysztor, Greg Crowe, Holly Story, Yolanda Stapleton, Jane McKay, Koral Island and Stripe (Poets of the Machine) and Bennett Miller

Professional Development – Regional + Indigenous

Valuing Pilbara Indigenous Art (Supported By Rio Tinto)

Topics covered include: Value Adding to Your Art Practice, Using Found Objects in Art, Studio Development, Printmaking and Artist Books, Cossack Art Awards – Support for Art Centres, Promotion and Profile Building for Artists, Weaving with Local Materials, Strategic Support

Artists attended from: Roebourne Art Group, Yinjaa Barni Art Centre (Roebourne), Karratha, Tom Price Cultural Centre, Ashburton Aboriginal Corporation (Tom Price), Paraburdoo, Karajini and Cossack

Guest Presenters + Advisors included: Dale Tilbrook, Leah Tarlo, Arif and Audrey Satar, Ric Spencer and Nalda Searles

Make Time To Talk Skills Development Workshops (Supported by Healthway and Relationships Australia)

Topics covered include: Linocuts and Printmaking Techniques, Ascertaining Artist Professional Needs, Pricing Your Artworks, Studio Practice

Artists attended from: Geraldton and surrounding areas including Bootenal, Kalbarri, Mullewa, Morawa, Northampton, Arts and Cultural Development Council, Yamaji Art; Mt Barker, Albany, Katanning and Fremantle.

Guest Presenters + Advisors included: Helen Clarke, Delwyn Everard and Brad Webb from Artslaw, Janis Nedela

Newman Town Centre Park

Topics covered: Decorative Cement Techniques Workshop

Guest Presenters + Advisors: Margaret Dillon and Francis Kotai

Artsource also hosted or contributed to the following events and workshops:

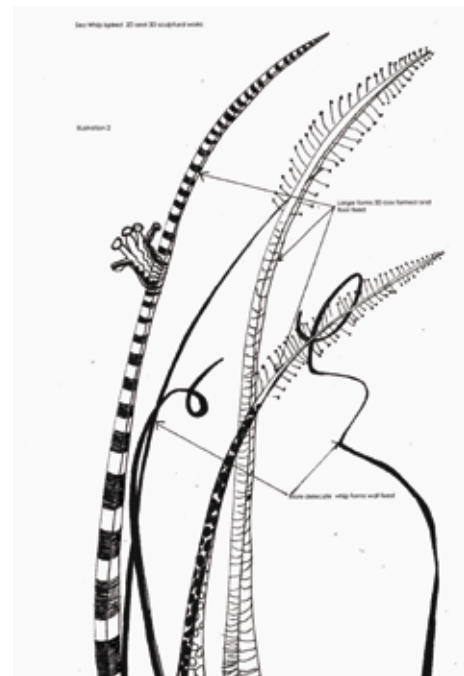
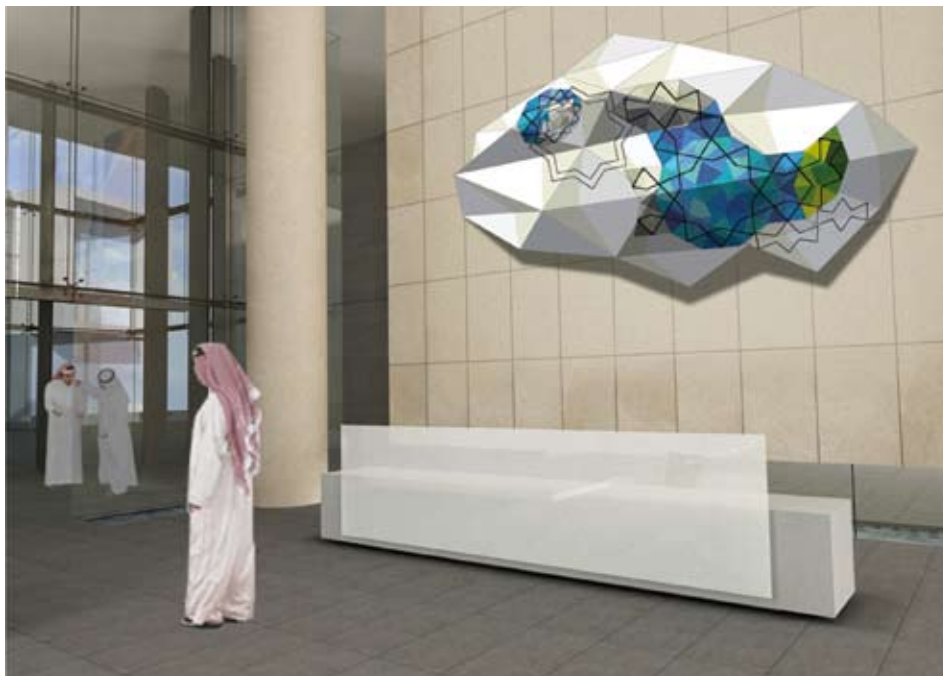
- PSog: Perth Samplings 09 (Office of the Government Architect);
- Running a Creative Business, presented with SODA Studios, a sundowner for the Design Institute of Australia (WA);
- Life after Art School – an Artsource presentation for Edith Cowan University students;
- Public Art – an introductory talk; University of the third age (AGWA), Curtin University Interior Architecture, Shire of Kwinana

Top left

Janine McAullay Bott, *Slip the Seal*. Photo: Anna Kanaris

Top right

Felicity Peters, *Jumping Ship*. Photo: Victor France



Art Consultancy – International Projects

ArtConnect is a project developed upon the premise that Australian artists are well equipped to develop large scale projects for the public realm, and they are competitive in an international marketplace.

It really began to take shape in 2009, after a pilot series of investigative meetings that we had undertaken the previous year to Singapore and the Middle East began to bear fruit for our artists. With these positive results coming through, we were able to expand the group of artists whose work we were representing for the project.

Through focused regional meetings, assistance from the WA Trade Office in Dubai and Austrade in Singapore, we have been able to develop extensive productive networks. Integral to the approach has been a fostering of these international relationships by regular visits.

Utilising individual brochures featuring the public art practice of selected artists combined with electronic presentations and an email newsletter featuring work by a broader selection of our members we are able to present exemplary projects.

Singapore

In order to further our developing connections with Singapore Artsource hosted the Singaporean public art curator Swee Lin Tay in Perth in August. The visit allowed Swee Lin to expand her knowledge of Australian public art practice, meet artists both in their studios and working on site at various projects, and to attend the presentations of several artists in one sitting.

The visit also allowed a key opportunity for Swee Lin to fine tune a project involving Perth artists that she is coordinating in Singapore. In 2009 Coral Lowry and Nola Farman won commissions for works in a new mixed-use development in Singapore to be opened in mid 2010. The chance to work closely with Swee Lin was relished by Coral Lowry invaluable adding to the development of her work for the project.

Artsource also visited Singapore for a second time in November, to meet with a range of developers, architects, galleries, artists and arts organisations for future projects.

Dubai and Abu Dhabi

Continued advocacy work in Dubai and Abu Dhabi resulted in site-specific commissions for five artists. In addition, eleven other Australian artists achieved significant purchases of their work.


In combination, these commissions and sales have a value of just over AUD 1.3million for Australian artists and Artsource, and will be completed in 2010.

We also achieved Federal support from the Australia Council and Austrade to continue the development work and are vigorously exploring further opportunities in the two regions.

Artists Abu Dhabi site specific commissions:

Stuart Green, Jon Tarry, Jo Darbyshire, Caspar Fairhall and Tom Müller

Artists Abu Dhabi

Purchase of works by Trevor Vickers, Kingsley Burton, Mary Dudin, Galliano Fardin, Bevan Honey, Jeremy Kirwan Ward, Giles Hohnen, Penny Bovell, Ingrid Kellenbach, Richard Dunn and Marion Borgelt. 

Top left

Caspar Fairhall, Concept drawing for Abu Dhabi Commission

Top right

Coral Lowry, Concept drawing for Mapletree Commission, Singapore

artConnect
Australian artists for public spaces



Art Consultancy – Australian Projects

We aim to assist both our clients and artists to create the best possible solutions for their project needs. Projects vary from commissions to create contemporary art using cutting edge technologies, to ones in which interpretation, memory and place underpin the artwork solution.

i500

In November 2009, the Curtin Resources and Chemistry Building opened, completing the project that has been in development since 2005.

Artsource was appointed by the University to coordinate the project. Artists were selected by interview following Expressions of Interest advertised nationally. Selected artists Paul Thomas, Mike Phillips and Chris Malcom developed a complex, technical work using sophisticated software and a computer system with the building management system. Designed to integrate with the fabric of the building, the resulting work is the first of its kind in Australia.

The artwork responds to the activity levels of the building. Activity within the building – information technology, internet, electrical and human movement – is expressed, re-ordered and 'read' by the computer software and then relayed through large scale permanent projections embedded on the ceiling in the atrium space.

Moving continuously and gently, the work creates a sense of a cathedral-like 'sky-view'. The effect is of a majestic progression of data and images flowing through the 'brain' of the building.

In 2009 Artsource worked on 13 consultancy projects generating \$2,236,000 for the benefit of 28 artists

A growing component of the projects that Artsource and our artists are invited to participate in revolve around interpretation, memory and place. Two projects in 2009 specifically addressed these concerns the Busselton Jetty Interpretation and the Yagan Memorial Park.

Busselton Jetty Heritage Interpretation Plan

As a result of considerable advocacy for the role artists play in interpreting and communicating memories of place, Artsource was invited by Palassis Architect to contribute to this major rebuild of a historical landmark.

Artsource worked with the team to provide a comprehensive master plan for the use of artworks, which were commissioned as a result of the Busselton Percent for Art Scheme. The resulting plan identified art as a significant tool in heritage interpretation, outlining a method utilising art and place making, with collaboration as a key component. Artsource also provided advice on public art procurement processes. The plan is to be implemented as the jetty is rebuilt and refurbished in 2010.

2009
\$2,236,000
13 projects
benefiting 28 artists

Top left

Paul Thomas, Chris Malcom, Mike Phillips; i500, Chemistry and Minerals Precinct, Curtin University, WA. Architect: Woods Bagot

Top right

Judith Forrest
Commission for 1 Station St, Subiaco



Yagan Memorial Park

This project is highly significant for the Nyoongar and wider community. The murder of Nyoongar warrior Yagan in 1833 and the subsequent removal of his remains to Great Britain will finally be rectified with the return of his *kaat* for reburial in a new memorial park.

The project called for Nyoongar artists to create works that tell the story of Yagan's life and death, to be incorporated within the new Yagan Memorial Park, the site of his death in the Swan Valley. The City of Swan asked Artsource to assist in the initial selection process and subsequent support of artists throughout the project.

This was an opportunity for our Nyoongar artist members to develop their experience in the public art field. Peter Farmer was commissioned to design a site wall and park entry statements. Peter invited Kylie Ricks to develop a design for the female Coolamon, and additionally Sandra Hill and Jenny Dawson were commissioned to create an entry wall relaying Yagan's story.

A major celebration will be held in June 2010 to celebrate the reburial and park to be opened to the public for remembrance and contemplation.

Brownlie Towers Project Refurbishment

With two large 1970s apartment towers housing 500 residents in Bentley well overdue for refurbishment, Morley Davis Architects were keen for artists to assist in the process.

Artsource shaped the project by recruiting some of WA's leading photographers.

Artists were invited to develop a series of works for the seven floors. The Tenants Association participated in the selection process and artists Christopher Young, Andrew Pritchard, Margaret Dillon and Florence Allain were offered the opportunity to create art works. The concept behind the artworks was to give the residents a view into 'another world', offering meditative opportunities to contemplate these worlds. Some of the artists engaged with residents creating works directly reflecting the people and the place.

Innovative methods to increase the life of the works were used, with photographs made permanent through the use of ALUimage, whereby images are impregnated within aluminium sheeting, ensuring maximum durability. Photographic images were also etched onto concrete tiles to deliver individual works for each of the 23 floors.




Wonder Walls

Two walls across metropolitan Perth have been transformed by artist Eveline Kotai into permanent artworks. Applying a vibrant colour palette and recurring motifs, the walls of the two distinct buildings are now vivid works for the public to enjoy.

A private development in Subiaco now boasts a dynamic background for the adjacent market-goers to view. Designed to change with the light, it offers a different view at different times of the day. Architects Oldfield-Knott commissioned Eveline to create a design 'wrapping' a building in the city, incorporating a large expanse of uninterrupted wall space. The architects worked in consultation with Eveline, so that the wall would in effect be a 'blank canvas' for her work.

Northern Territory Police

On the strength of Artsource advocacy work in the Northern Territory in 2008, we were invited by the Northern Territory Police to assist in scoping a public art project and procurement process for a public artwork commemorating policing in the Territory. Our consultative role involved developing the artwork brief, facilitating the selection process and nominating representation on the selection panel, and we remain with the project on an as-needs basis. This was an excellent opportunity for Artsource to view submissions from around the country. Work is scheduled for competition in October 2010. 

Top
Peter Farmer (right), with CTech Engineering fabricator,
Yagan Memorial Park

Above
Margaret Dillon, *Untitled*. Photo: Christopher Young



ArtLease

While the difficult global financial climate of 2009 did affect the growth of new business, it was our ongoing business with existing ArtLease clients that kept figures strong...

2009
34 Artists
(valued at \$23,500)

Jo Darbyshire's work was selected for 22 Railway Rd, Subiaco as a result of our new e-newsletter showcasing art that is currently available for lease.

While the difficult global financial climate of 2009 did affect the growth of new business for the fledgling ArtLease service, it was our ongoing business with existing ArtLease clients including the Chamber of Minerals and Energy of Western Australia (CME), Blake Dawson and the District Court that kept figures strong.

Paul Frewer: Director CME

The CME, the peak mining and resources industry body in WA, is always a hive of activity with regular meetings with our member companies, committee meetings, visits from Government representatives and international delegations.

It is important that our office reflects a professional image but also demonstrates our connection with the arts and in particular with WA art. We worked with Artsource to select a collection suiting our office design and reflecting the colours and themes of WA. We are pleased to be able to profile the works of some great WA artists.

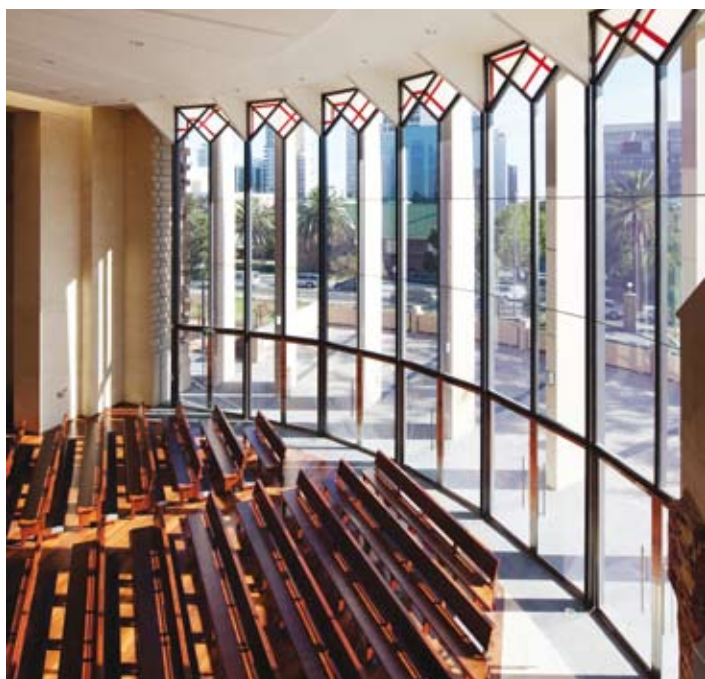
Patricia Hines: Artist

As a consequence of exposure in an Artopia artist@work residency at Boddington Gold Mine and ResourceCity in 2007, the CME approached me as they were keen to have some mining related works on the walls, when they refurbished their offices. The lease of my artworks by CME has been successfully achieved through Artsource ArtLease and the great thing is that it opened up opportunities for other artists to be involved as well. My works are displayed in a wonderful light-filled office and are also in excellent artistic company! I am pleased as punch!

Artsource offers professional services in selecting artworks to enrich working environments – artworks which reflect a company's philosophy and communicate their unique identity to staff, clients and visitors. A corporate collection can be developed by both leasing and purchasing artworks. We also assist in the installation of the artworks and how to get the most out of your collection on an ongoing basis. ☺

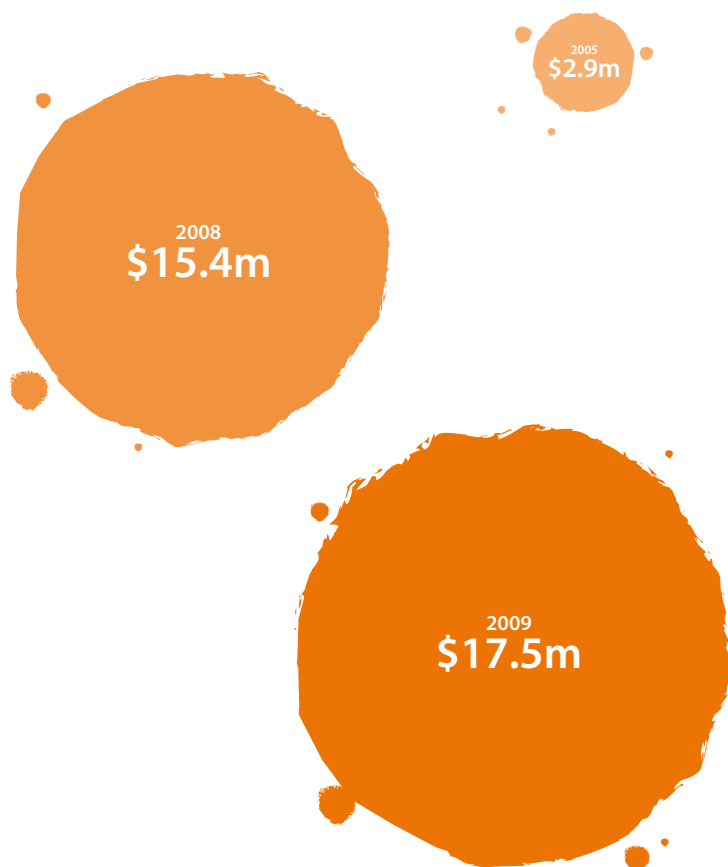
Top

Jo Darbyshire, *Dreaming Underwater #1*, oil on canvas, 1.5 m x 3.0 m
To buy or lease: \$10,890 or \$990 per year.
Photo: Nathan Martella



Employment for Artists

Over the last five years, from 2005–2009, Artsource has promoted over \$52m worth of employment opportunities to artists



In a year where there was significant market uncertainty and where gallery sales all but dried up, the number and value of commissions, and arts administration jobs was surprising and pleasing. The figures reflect the government's infrastructure programs, the investment made by resource companies into community and cultural development, and the strong growth in confidence from local government.

Artsource staff constantly search for new opportunities and work closely with potential clients to provide quality outcomes for their projects.

In 2009 Artsource filtered 347 employment opportunities to WA artists valued at over \$17.5million (see table p23). Opportunities included commissions, purchases, contract work, residencies, teaching and other employment in 'arts jobs'.

Employers include schools, local government, redevelopment authorities, developers, architects, landscape architects, urban and interior designers, town planners and individuals.

Artsource PLUS and MAX members receive a weekly e-bulletin of employment opportunities. [G](#)



Opposite top

Rose Skinner, *Falling from Cloud Nine*
2m x 2m x 8m, Enx100 Atrium

Opposite bottom

Peter Bowles designed the top detail of the windows of the assembly windows, St Mary's Cathedral, Perth

Top left

Kyle Hughes-Odgers, *This Roof*

Top right

Simon Gilby, one of ten, *The Syndicate*
Photo: Annie Hsiao-Wen Wang

Employments Agency Statistics

	2005	2009
No. of jobs promoted to members	171	347
AUD\$ values		
Value of all jobs promoted	2,957,620	17,459,201
– Art Commissions	2,033,780	8,714,514
– State Government Percent for Art commissions	923,840	1,907,300
– Art administration jobs	NA	6,837,387
Number of Commissions and jobs by Type of Employer		
Art organisations	43	118
State Government Percent for Art	18	17
Local Government	34	62
Private Clients	48	59
Education	14	69
Government – other	14	22
TOTAL	171	347



Sources of Income

One of the financial aims of Artsource is to become less reliant on government funding and to increase the amount of income from our fee-for-service activities. This has a double benefit; all the activities provide additional services to our membership, and the income generated is not tied to any particular activity so Artsource can determine the best use of these funds.

Most Artsource activities are low risk. The only income area that is speculative is consultancy services and this is always budgeted conservatively. In all other circumstances, income is received in advance before expenditure is committed.

Fee-for-service

Between 2005–2009 our fee-for-service income increased by 92% from \$275,233 to \$528,332; whilst our core funding from the Department of Culture and the Arts increased by 23% from \$279,260 to \$343,379.

The increase in fee-for-service activities is the result of an increase in the core business activities of the organisation over the past five years. This includes:

- the number of members – increased from 532 to 940
- the number of studios – increased from 24 to 60
- the value of consultancy fees – increased from \$35k to \$61k
- the value of employment opportunities promoted – increased from \$2.9m to \$17.5m

Fees-for-Service

2005
36.8%
\$275,233

2009
46.9%
\$528,332

Project Grants

2005
25.9%
\$194,286

2009
22.6%
\$254,588

Top left

Mark Parfitt (Artspace Residency Recipient)
Carlisle Buffalo (Installation View)

Top right

Angela McHarrie, *Questions without Answers* (detail)



Staff

In contrast, our staff numbers have increased by only 0.1 FTE since 2005. Salary expenses increased by 28% during this five year period; all positions receive annual increases and we are committed to improving the salary levels.

Other items of note

- Since 2005, turnover increased by one third and we expect this to double again in the coming two years.
- Since 2005, funding for the Regional + Indigenous program also doubled. In 2009 funding for the program is generated entirely from corporate sponsorship and project grants; there is no State Government investment into this program
- Our equity position has increased modestly from \$108,965 in 2005 to \$120,160 in 2009. In addition, there is \$41,023 identified separately as donated funds earmarked for artist residency grants, and a further \$2,233 identified as general donations.

Core Funding – Dept. Culture & the Arts

2005
37.3%
\$279,260

2009
30.5%
\$343,379

Total Income

2005
\$748,779

2009
\$1,126,299

Directors' Declaration

The directors of the company declare that:

1. The financial statements and notes as set out on pages 8–30 are in accordance with the Corporations Act 2001 and:
 - a. comply with Accounting Standards as described in Note 1 to the financial statements and the Corporations Regulations 2001; and
 - b. give a true and fair view of the company's financial position as at 31 December 2009 and of its performance for the year ended on that date in accordance with the accounting policies described in Note 1 to the financial statements.
2. In the directors' opinion there are reasonable grounds to believe that the company will be able to pay its debts as and when they become due and payable.

This declaration is made in accordance with a resolution of the Board of Directors.



Graeme Rowley
Director

Dated this 13th May 2010



Bob Poolman
Director

Auditor's Independence Declaration under s.307C of the Corporations Act 2001 to the Directors of the Artists Foundation of Western Australia Limited

I declare that, to the best of my knowledge and belief, during the year ended 31 December 2009 there have been:

- i. no contraventions of the auditor's independence requirements as set out in the Corporations Act 2001 in relation to the audit; and
- ii. no contraventions of any applicable code of professional conduct in relation to the audit.

Francis A Jones Pty Ltd

Certified Practising Accountants



Mario Cattalini
Registered Company Auditor

13th May 2010

154 High Street
Fremantle WA 6160

Balance Sheet

As at 31 December 2009

Full audit available on request from Artsource

	2009 \$	2008 \$
ASSETS		
CURRENT ASSETS		
Cash & cash equivalents	338,840	489,847
Donations – Residency Fund	41,715	48,465
Donations – General	2,233	5,477
Receivables	219,626	63,118
TOTAL CURRENT ASSETS	602,414	606,907
NON-CURRENT ASSETS		
Property, plant & equipment	21,923	24,039
TOTAL NON-CURRENT ASSETS	21,923	24,039
TOTAL ASSETS	624,337	630,946
LIABILITIES		
CURRENT LIABILITIES		
Payables	379,276	429,911
Provisions	80,953	40,956
TOTAL CURRENT LIABILITIES	460,229	470,867
TOTAL LIABILITIES	460,229	470,867
NET ASSETS	164,108	160,079
EQUITY STATEMENT		
Accumulated Funds	120,160	106,137
Donations – General	2,233	5,477
Donations – Residency Fund	41,715	48,465
TOTAL EQUITY 2009	164,108	160,079
OPERATING SURPLUS		
Net surplus as per Profit & Loss	4,029	48,540
Plus Drawings from General Donations pre 2009	3,500	
Plus Drawings from Residency Donations pre 2009	8,100	
Sub Total	15,629	48,540
Less Donations to Residency Fund in 2009	1,350	47,965
Less General donations in 2009	256	
OPERATING SURPLUS 2009	14,023	575

Income + Expenditure Statement 2009

Full audit available on request from Artsource

INCOME	2009 \$	2008 \$
Organisation Grants		
Department of Culture & the Arts – core funding	343,379	327,906
Department of Culture & the Arts – artist residency grants	37,800	27,800
Regional + Indigenous Development		
Department of Culture & the Arts		30,707
Dept of Local Government & Regional Development	8,237	15,876
Department of Transport & Regional Services		51,815
Country Arts WA – Regional Arts Fund	12,269	33,846
Rio Tinto	91,282	31,676
Healthway	17,977	9,826
Indigenous Business Australia	1,929	
Project Grants		
Department of Culture & the Arts – Ignite equipment grant	21,883	
City of Fremantle – Open Studios Event	2,500	
Australia Council for the Arts – artConnect	25,589	20,000
Lotterywest – equipment		10,000
Sundry Grants	35,122	
Donations – General	256	125
Donations – Residency Fund	1,350	47,965
Interest	12,052	13,137
Membership Fees		
Artsource ACCESS Membership	9,800	10,037
Artsource PLUS Membership	26,833	29,355
Artsource MAX Membership	55,183	51,682
Artsource CLIENT Subscription	7,339	7,404
Sales & Service		
Administration Services	74,950	27,300
Advertising	4,744	8,826
Packing Materials, Support Services	836	2,228
Professional Services, Consultation Fees, Data Access	211,883	65,388
Registration Fees – Workshops	2,829	3,018
Sundry	7,859	3,081
Rent – Studios	112,418	103,056
TOTAL INCOME	1,126,299	932,054



Full audit available on request from Artsource

EXPENDITURE	2009 \$	2008 \$
Administrative	30,574	48,018
Artist/Tutor/Presenter Fees	14,754	9,987
Bad Debts	4,592	
Cleaning, Electricity, Rates, Repairs	41,122	36,433
Computer & Equipment	12,816	25,621
Grant payments to artists	41,100	25,700
Operating Expenses	132,817	75,810
Professional Services Outgoings	129,313	13,972
Rent/Lease Premises	45,925	43,365
Travel & Accommodation	22,829	33,217
Employment Expenses		
Contract Consultant Fees	15,152	8,441
Salaries, Superannuation, Workers Compensation	477,402	389,204
Regional Program	153,874	173,745
TOTAL EXPENDITURE	1,122,270	883,513

Kathryn **ABON** Marc **ABONNEL** Abdul-Hamid **ABDULLAH** Abdul-Rahman **ABDULLAH** Gary **AITKEN** Jonathan **AKERMAN** Amanda **ALDERSON** Neil **ALDUM** Tracey **ALEXANDER** Behzad **ALIPOUR** Florence **ALLAIN** Kathy **ALLAM** Monia **ALLEGRE** Ella **ALLEN** Gemma **ALLEN** Ayad **ALQARAGHOLLI** Shiva **AMIR-ANSARI** Sashi **ANANDAN** Bernadette **ANDERSON** Danielle **ANDREE** Nicole **ANDRIJEVIC** Jill **ANSELL** Daryn **ANSTED** Richard **APEL** Hans **ARKEVELD** Armadale **SOCIETY OF ARTISTS** Stephen **ARMITSTEAD** Eve **ARNOLD** Liz **ARNOLD** Greg **ASH** Kathy **ASPINALL** Rebecca **ATKINSON** Catherine **AUVITY** Carol **AYRES** Louise **BAHR** Claire **BAILEY** Margaret **BAKER** Marina **BAKER** Adrian **BALDSING** Mugurel **BARBULESCU** Blair **BARKER** Heather **BARKER** Rachael **BARKESS** Alison **BARRETT** Dawn **BARRINGTON** Zoe **BARRY** Jan **BATEMAN** Corinne **BATES** Natarsha **BATES** Rebecca **BAUMANN** Maggie **BAXTER** Jennifer **BAY** Jacinda **BAYNE** Jenny **BEAHAN** Kerrie **BEAR** Claire **BEAUSEIN** John **BEJKO** Patti **BELLETTY** Merrick **BELYEA** Gemma **BEN-ARY** Ian **BENISTON** Amanda **BENN** Yolande **BENNETT** Matthew **BENSON-PARRY** Aloma **BERG** Belen **BERGANZA** Allison **BERVELING** Rebecca **BIGG** Olive **BIRCH** Sandra **BITUNJAC** Kat **BLACK** Pauline **BLACK** Sandra **BLACK** Maria **BLACKMORE** Penelope **BLADEN** Robin **BLAU** Tim **BLAXELL** Lynn **BLENDELL** Gloria **BLISS** Emma **BLYTH** Frances **BLYTHE** Helen **BODYCOAT** Robyn **BOGDANIS** Helena **BOGUCKI** Deborah **BONAR** Alex **BOND** Mutsuko **BONNARDEAUX** John **BORLEY** Allan **BORWICK** Ryan **BOSERIO** Craig **BOULTER** Daniel **BOURKE** Penny **BOVELL** Denise **BOWEN** Peter **BOWLES** Petite-Cherie **BOYLAN-KNIGHT** Bruce **BRADFIELD** Vanessa **BRADLEY** Jane **BRANS** Nathan **BRAY** Sue **BRIGGS** Pamela **BRITTAIN** Lucy **BROMELL** Philippe **BROOKS** Helen **BROOSHOOFT** Nicholas **BROUGHTON** Denise **BROWN** Jessica **BROWN** Roderick **BROWN** Tanya **BROWN** Danny **BROWNE** Aadje **BRUCE** Sandra **BRYANS** Hilary **BUCKLAND** Elizabeth **BULLARD** Graeme **BURGE** Sophie **BURGOYNE** Barbara **BURKE** Tim **BURNS** Marie-Annick **BURRIDGE** Cassandra **BURTON** Kingsley **BURTON** Betsy **BUSH** Claire **BUSHBY** Noel **BUTLER** Chubby **BUTTON** Trish **BYGOTT** Doreen **BYRNE** Roslyn **CADEE** Melanie **CALDER** Peter **CAMPAGNA** Kate **CAMPBELL-POPE** Christophe **CANATO** Ryan **CANT** Joanna **CAPELLE** Paul **CAPORN** Pierre **CAPPONI** Susan **CARAMELI** Diana **CAREW-REID** Melissa **CAREY** Andrew **CARTER** Janet **CARTER** Lance **CHADD** Shaun **CHAMBERS** Andre **CHAN** Jennifer **CHANDLER** Barbara **CHAPMAN** Keith **CHESSON** Lynn **CHRISTISON** Peteris **CIEMITIS** Olga **CIRONIS** Justin **CLAPIN** Alan **CLARK** Glen **CLARKE** Helen **CLARKE** Martin **CLARKE** Sara **CLARKE** Madeleine **CLEAR** Carol **CLITHEROE** Elaine **CLOCHERTY** Rachel **COAD** Erin **COATES** Jennifer **COCHRANE** Anna **COCKS** Milton **COCKS** Sue **CODEE** Charlie **COLBUNG** Tanja **COLBY** Richard **COLDICUTT** Angus **COLE** Sheridan **COLEMAN** Rosemary **COLLARD** Kathy **COLLETT** Caroline **COLMAN** Nic **COMPTON** Sam **CONNOR** John **CONSTANTINE** Jasper **COOK** Joe **COOK** Peter **COOK** Deb **COOPER** Debra **CORBETT** Judy **COREMANS** Marilyn **CORICA** Lorraine **CORKER** Peter **CORLETT** Penny **COSS** Brett **COWAN** Glen **COWANS** Shelley **COWPER** Felicity **COX** Margaret **COXALL** Georgina **CRESSWELL** Rob **CRIPWELL** Jennifer **CRISP** Paula **CRISTOFFANINI** Di **CUBITT** Lazo **CUJETICANIN** Tony **CUNNINGHAM** Catherine **CZERW** **DADAA** Drago **DADICH** Peter **DAILEY** Dominic **DANIELLE** Brendon **DARBY** Jo **DARBYSHIRE** Ayla **DARE-COLLARD** Serena **DA ROZA** Jo **DARVALL** Mark **DATODI** Clare **DAVIES** Natalie **DAVIES** Owen **DAVIES** Peta **DAVIES** Annette **DAVIS** Jeremy **DAVIS** Rob **DAVIS** Sharon **DAWES** Jenny **DAWSON** Krissie **DAWSON** Nadia **DEACON** Stephen **DELANEY** Gabriella **D'ELIA** Elizabeth **DELFS** Jon **DENARO** Adam **DERUMS** Gail **DEVINE** Jen **DEVOS** Jessica **DIB-NEWBERY** Matt **DICKMANN** Alan **DIGGIN** Rod **DILKES** Margaret **DILLON** Judith **DINHSON** Erin **DIXON** Hilda **DIXON** Pat **DIXON** Daniela **DJUGOCZ** David **DOEPL** Jenni **DOHERTY** Michael **DOHERTY** Bethany **EGGELING** Maggie **EL-MUGHEIRY** Neil **ELLIOTT** Stuart **ELLIOTT** Vincent **ELLIOTT** Cynthia **ELLIS** Cynthia **ELLIS** Maureen **ELPHICK** Louise **ELSCOT** Sarah **ELSON** Kaye **EMBLETON** Holly-Mae **EMERSON** Tami **ESANCY** Esperance **COMMUNITY ARTS** Viktor **ESZENYI** Gabriel **EVANS** Jonine **EVANS** Sarah **EVE DEAMAN** Brett **EVILL** Robert **EWING** Victoria **EYRE** Caspar **FAIRHALL** Roberta **FALKNER** Linda **FARDOE** Nola **FARMAN** Peter **FARMER** Francis **FARQUHARSON** Terry **FARRELL** Matthew **FARRIS** Kate **FAULDS** Stephanie **FAULKNER** Adriana **FERNANDES-GONCALVES** Eva **FERNANDEZ** Angela **FERROLA** Tania **FERRIER** Jodie **FEWINGS** Donovan **FISHER** Marie **FISHER** Rosemary **FITZGERALD** Susan **FLAVELL** Hayley **FLETCHER** Mary **FLYNN** Christine **FOGARTY** Rob **FORLANI** Penelope **FORLANO** David **FORREST** Judith **FORREST** Janet **FOUNTAIN** Jennifer **FOX** Anna-Mair **FRANCIS** Karen **FRANCIS** Willow **FRANCIS** Lyn **FRANKE** Karen **FRANKEL** Rina **FRANZ** Tom **FREEMAN** Diana **FROST** Pamela **FRUIN** Lindy **GAISFORD** Peta **GALLOWAY** Dawn **GAMBLER** Philip **GAMBLER** Fiona **GARDNER** David **GARLAND** Rod **GARLETT** Tim **GARRITY** Simon **GAUNTLETT** Sarah **GAZIA** Indra **GEIDANS** Stephen **GENOVESE** Dan **GENTLE** Douglas **BURTON** Jillian **GIBBNEY** Kay **GIBSON** Ingrid **GIDDY** Simon **GILBY** David **GILES** Kerry **GILMOUR** Sue **GIRAK** Simon **GIRAUDO** Dan **GLADDEN** Rodney **GLICK** Inta **GODDARD** Christine **GODFREY** Kate **GOFF** Julie **GOLDENBERG** Margery **GOODALL** Matthew **GOODLET** Roger **GOODMAN** Elizabeth **GORDON** Philippa **GORDON** Anna **GORI** Jane **GRAHAM** Ken **GRAHAM** Peter **GRAHAM** Lorena **GRANT** Naomi **GRANT** Jodie **GRAY** Priya **GREALLY** Charmaine **GREEN** Jillian **GREEN** Miik **GREEN** Stuart **GREEN** Barbara **GREENSHIELDS** Christine **GREGORY** Bevan **GRIGGS** Jillian **GRIMBECK** John **GRONO** Leida **GROSS** David **GUHL** Richard **GUNNING** Marie **HAASS** Barbara **HADDY** Cherina **HADLEY** Roverina **HAIZER** Tanja **HAKE** Ruth **HALBERT** Katherine **HALL** Shannon **HALL** Greg **HAMILTON** Marilyn **HAMILTON** Marie **HAMMAT** Richard **HAMMER** Elizabeth **HAMMOND** Frances **HAMMOND** Anwen **HANDMER** Nidia **HANSEN** Kristine **HANSON** Katrine **HARDWICK** Jane **HARDY** Mary **HARDY** Elise **HARMSSEN** Amanda **HARRIS** Lara **HARRIS** Lindsay **HARRIS** Malcolm **HARRIS** Pam **HARRISON-BOYD** Cynthia **HARRISON** Jo **HARRISON** Yvonne **HARRISON** Ann **HART** Paula **HART** Caroline **HARTE** Mandy **HARWOOD** Amanda **HASENKAM** Anthony **HASLUCK** Jean **HATTINGH** Katherine **HAUG** Susan **HAURI-DOWNING** Lois **HAYES** William **HEEREY** Thomas **HEIDT** Julie **HEIN** Nigel **HELYER** Cheryl **HEPPEL** Penny **HERBERT** Graham **HERITAGE** Gigi **HESTERMAN** Robyn **HEWETT** Nigel **HEWITT** Mark **HEWSON** Willem **HEYNEKER** Catherine **HIGHAM** Maria **HILDRICK** Ken **HILL** Sandra **HILL** Joan **HILLMAN** Laura **HINDMARSH** Patricia **HINES** Jason **HIRST** Anisa **HIRTE** Jackie **HOEKSEMA** Rachel **HOGGERMEER** Rose **HOLDAWAY** Leon **HOLMES** Wendy **HOLMES** Emily **HOLT** Bevan **HONEY** Christopher **HOPEWELL** Karen **HOPKINS** Chelsea **HOPPER** Nick **HORN** Lewis **HORNE** Beverly **HORNIBROOK** Colin **HOWARD** Louise **HOWARD** Susan **HOY** Penny **HUDSON** Kyle **HUGHES-ODGERS** Harry **HUMMERSTON** Si **HUMMERSTON** Carly **HUNTER** Moira **DE LA HUNTY** Chiara **HUNWICK** Darren **HUTCHENS** Celestin **HUTCHINSON** Patrick **HYDE** Julie **HYLANDS** Beverley **ILES** Daniel **ILEY** Kieran **INGRAM** Vera **INGRAM** Maya **INK** Anne **IRVINE** Andrea **ISAAC** Cathy **ISBISTER** Ismiadi **ISMIADI** Todd **ISRAEL** Francis **ITALIANO** Michael **IWANOFF** Catherine **JACK** Dianne **JACKSON** Ren **JAKOVICH** Elizabeth **JAMES-TAYLOR** Brian **JAMES** Greg **JAMES** Shana **JAMES** Ashley **JANGALA SMITH** Leith **JANSEN** Ramona **JANSSEN** Margaret **JEFFERY** Wayne **JEFFERY** Jewellers **AND METALSMITHS GROUP OF AUSTRALIA** Louise **JOESBURY** Siglinde **JOHANNESSEN** Melanie **JOHN** Paul **JOHNSON** Sandra **JOHNSON** Cherry **JOHNSTON** Greg **JOHNSTON** Adrian **JONES** Ben **JONES** Buffy **JONES** David **JONES** Kate **JONES** Rhett **JONES** Tony **JONES** Amelia **JOSEPH** Louise **JOSEPHS** Magda **JOUBERT** Jessica **JUBB** Bec **JUNIPER** Michael **JUROTTE** Jane **KAGI** Bernhard **KAISER** Sue **KALAB** Arthur **KALAMARAS** Ionas **KALTENBACH** Michael **KANE TAYLOR** RONALDA **KARAM** Nathan **KARNOVSKY** Rohan **KARPE** Andrew **KAY** Ingrid **KELLENBACH** Oliver **KELLOW** Jill **KEMPSON** Peter **KENDALL** David **KENWORTHY** Jurgen **KERKOVUS** Stacy **KERSHAW** Gordana **KEZIC** Francine **KICKETT** Martin **KIDD** Kidogo **ART INSTITUTE** Michiko **KIKUCHI** Ida **KILLIGREW** Paula **KILLIN-MULLINS** Jane **KING** John **KING** Lesley **KING** Jeremy **KIRWAN-WARD** Gina **KITCHEN** Phyllis **KJELLGREN** Florence **KLEIN** Maree **KLINAC** Mary **KNOTT** Ruth **KOEDYK** Kimberley **KOHAN** Kate **KOIVISTO-WHEELER** Waldemar **KOLBUSZ** Anastasija **KOMARNYCKYJ** Iris **KOORNSTRA** Max **KORDYL** Eveline **KOTAI** Francis **KOTAI** Judy **KOTAI** Darius **KOWAL** Voytek **KOZLOWSKI** Anthony **KRAUSE** Sarasa **KRISHNAN** Claire **KROUZECKY** Guundie **KUCHLING-FESSER** Richie **KUHAUPT** Sylvia **LACZKO** Bo **LAIDLER** Anne **LAING** Esther **LANE** Warren **LANGLEY** Jennifer **LAURIE** Jane **LAWTON** Farid **LAYOUS** Juliet **LEA** Sandra **LEACH**

Artsource gratefully recognises the financial support of its partners



Department of
Culture and
the Arts



lotterywest
supported



Australian Government

Visual Arts and Craft Strategy

Western Australia

Regional + Indigenous program supporters



DEPARTMENT OF TRANSPORT AND REGIONAL SERVICES



Department of Local Government
and Regional Development
www.dlgrd.wa.gov.au

RioTinto



Alia **LEADABRAND** Jonathan **LEAHEY** Jesse **LEE** Lucy **LEE** Tanya **LEE** Robyn **LEES** Michael **LEGGE-WILKINSON** Gail **LEIDICH** Eden **LENNOX** Amanda **LIN** Carmela **LITTLE** Trish **LITTLE** Robyn **LIVESEY** Stephen **LOBO** Valerie **LOCKE** Louise **LODGE** Ian **LOITERTON** Gemma **LORI** Nadeen **LOVELL** Camilla **LOVERIDGE** Felicia **LOWE** Peter **LOWE** Coral **LOWRY** George **LUCAS** Karin **LUCIANO** Wendy **LUGG** Serena **LUMLEY** Nancy **LUMSDEN** Jerrem **LYNCH** Katherine **LYS** Jamie **MACCHIOSI** Norma **MACDONALD** Tim **MACFARLANE** Reid Louise **MACFIE** Wendy **MACGIBBON** Tomasz **MACHNICK** Angus **MACLEOD** Melanie **MACLOU** Carl **MACMILLAN** Barbara **MADDEN** Penny **MADDISON** Maria **MADEIRA** Pat **MADIGAN** David **MAISANO** Steven **MAKSE** Maria **MALAY** Chris **MALCOLM** John **MALONEY** Gian **MANIK** Lee **MANSBRIDGE** Narelle **MANSER-SMITH** Kim **MAPLE** Daniel **MARANO** Britt **MARCH** Caroline **MARINOVICH** Mark **HOWLETT FOUNDATION** Elisa **MARKES-YOUNG** Carolyn **MARKS** Elwyn **MARREN** Adrienne **MARSHALL** Dot **MARSHALL** Lawrence **MARSHALL** Christine **MARTIN-HEGARTY** Claire **MARTIN** Jane **MARTIN** Katie **MARTIN** Glenice **MATTHEWS** Jason **MAXLOW** Minaxi **MAY** Gabrielle **MAZELSKIS** Alexander **MCCARTHUR** Janine **MCAULLAY** Bott Kevin **MCCABE** Jacob **MCCALLUM** Anne-Marie **MCCAUGHEY** Graeme **MCCULLAGH** Robert **MCCULLOCH** Carrie **MCDOWELL** Clare **MCFARLANE** Kristina **MC GEE** Nirmala **MCGOWRAN** Malcolm **MCGREGOR** Robert **MCGROARTY** Christina **MCGUINNESS** Angela **MCHARRIE** Amanda **MCHENRY** Jane **MCKAY** Sandy **MCKENDRICK** Aquila **MCKENZIE** Rachel **MCKENZIE** Lia **MCKNIGHT** Charles **MCLAUGHLIN** David **MCLEISH** Narda **MCMAHON** Pip **MCMANUS** Kate **MCMILLAN** Stuart **MCMILLAN** Mark **MCPHERSON** Emma **MCPIKE** Carmelina **MCQUEEN** Alana **MCVEIGH** Dawn **MEADER** Lesley **MEANEY** Marian **MEDD** Federico **MEDINA** Annie **MEDLEY** Keith **MELBOURNE** Elizabeth **MENDOZA** Lyn **MERRINGTON** Gary **MERSON** Belinda **METTAM** Annie **MEXTED** Alex **MICKLE** Nicole **MICKLE** Chriss **MIDDLETON** Igor **MIHAJLOVIC** Velvet **MILLAR** Alexandra **MILLER** Bennett **MILLER** Chris **MILLER** Jennifer **MILLER** Kate **MILLER** Peta **MILLER** Robin **MILLER** Stormie **MILLS** Dragica **MILUNOVIC** Marika **MIN-SWE** Rei **MINOHARA-STARKE** Ben **MITCHELL** Glenn **MITCHELL** Gordon **MITCHELL** Lynne **MITCHELL** Margaret **MITCHELL** Peter **MOIR** Hamdi **MOKHAYBER** Pamella **MOLLOY** Claudia **DE LA MOTTE** Nic **MONTAGU** Genevieve **MONTGOMERIE** Duncan **MOON** Alexander **MOORE** Ben **MORGAN** Alice **MORLAUS-JEFFREY** Karin **MORRIS** Sean **MORRIS** Sophie **MORRIS** Louise **MORRISON** Toogarr **MORRISON** Deeva **MUIR** Jane **MULCOCK** Heidi **MULDER** Alan **MULLER** Tom **MULLER** Zoila **MUNOZ** Lesley **MUNRO** Richard **MUNSIE** Nada **MURPHY** Emma-Jane **MURPHY** Norah **MURPHY** Lorna **MURRAY** Jilalga **MURRAY-RANUI** Maxine **MURRAY** Margaret **MUSCA** Hitesh **NATALWALA** Jennie **NAYTON** Janis **NEDELA** Sharyn **NEGRI** Anne **NEIL** Carolyn **NELSON** Bronwen **NEWBURY** Laura **NEWBURY** Patricia **NEWMAN-BRUTON** Jennie **NEWMAN** Stuart **NEWMAN** Mandy **NG** Yvonne **NIETRZEBIA** Regina **NOAKES** Brigitte **NODLER** Miles **NOEL** Deidre **NOON** Linda **NORTHCOTT** Clare **NORTHEND** Bridget **NORTON NORTHERN TERRITORY CENTRE FOR CONTEMPORARY ART** Nova **ENSEMBLE** Moz **NUAGENT** Ron **NYISZTOR** Suzanne **REDFORD** Jahne **REES** Abigail **Lucy O'DEA** Shayne **O'DONNELL** Gemma **O'KEEFE** Brendan **O'LEARY** Charlotte **O'SHEA** Lara **OH** Norah **OHRT** Margie **OLDFIELD** Annette **ORR** Marnie **ORR** Irene **OSBORNE** Kristine **OSTERMEYER** Annie **OTNESS** Geoffrey **OVERHEU** Jan **PALETHORPE** Jack **PAM** Tony **PANKIW** Johannes **PANNEKOCK** Angelina **PANNONE** Diana **PAPENFUS** Mark **PARFITT** Jill **PARNELL** Chrissie **PARROTT** Jean **PASTORE** June **PASTORE** Rory **PATON** Marijana **PAVLIC** Clare **PEAKE** Mel **PEARCE** Gillian **PEEBLES** Craig **PELUSEY** Chandy **PENDERGRAST** Tom **PENNY** Lori **PENSINI** Ina **PENSSLER** Nardia **PEOS** Denise **PEPPER** Holly **PEPPER** Sandra **PEPPER** Sandra **PEPPER** Sandra **PERRY** Jane **PESTELL-LITTEN** Felicity **PETERS** Felicity **PETERS** Kathrin **PETERS** Connie **PETRILLO** Alexander **WOLMAN** Charm **PHILLIPS** Gill **PHILLIPS** Mike **PHILLIPS** Perdita **PHILLIPS** Lorraine **PICHETTE** Jo **PICKUP** Amanda **PIKE** Amy **PLANT** Poets **OF THE MACHINE** Trudi **POLLARD** Christopher **POOLE** Bob **POOLMAN** Suss **PORSBORG** Lisa **PORTER** Tania **PORTER** Richard **POTTER** Merlene **POZZI** Danilo **PRAVICA** PRINTMAKERS ASSOCIATION OF WA **Andrew PRITCHARD** PROPEL **YOUTH ARTS** Gregory **PRYOR** Patrick **QUICK** Fiona **RAFFERTY** Bill **RAGAN** Layli **RAKHSHA** Rachael **RAMSAY** Mehdi **RASULLE** Maris **RAUDZINS** Annie **RAWLE** Margot **RAWLE** Stinger **RAY** Alwin **REAMILLO** Elisabeth **RECHICHI** Suzanna **REDFORD** Jahne **REES** Abigail **REID** Jeannette **REIN** Karla **REYES** Fran **RHODES** Julian **RHODES** Elisabeth **RIBUL** John **RICE** Jeremy **RICHARDS** Trevor **RICHARDS** Joanne **RICHARDSON** Francine **RICHES** Penny **RIDDOCH** Lucy **RIDSDALE** Leanne **DE RIECROFT** Jean-Marc **RIVALLAND RIZZY** Diana **ROBERTS** Kerry **ROBINS** Frances **ROBINSON** Gail **ROBINSON** Lyn **ROBINSON** Stacey **ROCCA** Judith **ROCHE** Rita **RODRIGUE** Judy **ROGERS** Alicia **ROSAM** Patricia-Rose **SMITH** Angela **ROSSEN** Alessandra **ROSSI** Camryn **ROTHENBURY** Cyrus **ROUSSILHES** Alistair **ROWE** Graeme **ROWLEY** Elizabeth **ROYCE** Lauren **RUDD** Jennifer **SADLER** Kirstine **SADLER** Kirstine **SADLER** Kirstine **SADLO** Helena **SAHM** Britt **SALT** Salu **ART JENNY SANDERSON** Jules **SANGSTER** Arif **SATAR** Audrey **SATAR** Deborah **SAVAGE-COOPER** Garimo **SCHAEFER** Andrea **SCHELL** Fleur **SCHELL** Lois **SCHENK** Nina **SCHLENZIG-BUTTON** Lorita **SCHMITZ** Eric **SCHNEIDER** Irene **SCHNEIDER** Danka **SCHOLTZ VON LORENZ** Tanya **SCHULTZ** Tessa **SCHULZ** Stephen **SCHULYTA** Nien **SCHWARZ** Lisa **SCIANO** Jenii **SCOTT** Sharon **SCOTT** Jenny **SCRAYEN** Ken **SEALEY** Nalda **SEARLES** Cim **SEARS** Helen **SEIVER** Dmitry **SERGEEV** Nina **SEY** Cher **SHACKLETON** Rebecca **SHEARDOWN** Amanda **SHELSHER** Susan **SHEPPARD** Anneli **SHORTER** Michelle **SICILIANO** Matthew **SIMMONS** Fiona **SIMMONS** Fiona **SINCLAIR** Mark **SINCLAIR** Mike **SINGE** Felicity **SIVEWRIGHT** Rose **SKINNER** Keera **SLAVIN** Wendy **SLEE** David **SMALL** Lorelie **SMIT** Anthony **SMITH** Caroline **SMITH** Helen **SMITH** Jacob **SMITH** Lara **SMITH** Lesley **SMITH** Melody **SMITH** Mitzi **SMITH** Robina **SMITH** Roxanne **SMITH** Tania **SMITH** Will **SMITHWICK** Joel **SMOKER** Craig **SNELL** Louise **SNOOK** Anne **SORENSEN** Ian **DE SOUZA** David **SPENCER** Michelle **SPENCER** Ric **SPENCER** Tania **SPENCER** Alex **SPREMBERG** Marc **SPRINGHETTI** Ivana **ST JOHN** Stephanie **STACEY** Ralph **STANTON** Neda **STARAC** Claire **STEELE** Noelle **STEENHAUSEN** Pascal **STEPHENS** Sue **STEVENSON** Angela **STEWART** Fiona **STEWART** Janine **STEWART** David **STOCKDALE** Sylvia **STONEHOUSE** Holly **STORY** Tammy **STOWE** Drew **STRAKER** Ian **STRANG** Mary-Lynne **STRATTON** John **STRIBLING** Ana **STUART** Catherine **STUART** Andrew **STUMPFEL** Joanna **SULKOWSKI** Barry **SULLIVAN** Huilin **SUN** Julia **SUTTON** Roger **SWAINSTON** SYMBIOTICA **Joyce SYMS** Robi **SZALAY** Leah **TARLO** Jon **TARRY** Diane **TASKER** Di **TAYLOR** Brian **TAYLOR** Dianne **TAYLOR** Julia **TECKENOFF** Alisa **TELETOVIC** Steve **TEPPER** Juana **TERPOU** Stephen **TERRY** Marina **TESTINI** Kati **THAMO WA CIRCUS SCHOOL** Michele **THEUNISSEN** Monika **THOMAS** Patricia **THOMAS** Paul **THOMAS** Bevan **THOMPSON** Rebecca **THOMPSON** David **THOMSON** David **TILLBROOK** Lynne **TINLEY** Sandy **TIPPETT** Marek **TOCZYLOWSKI** Pearl-Lynn **TOH** Alaisea **TOKUMA-CULL** Christine **TOMAS** Sarah **TOOHEY** Marzena **TOPKA** Narelle **TOUT** Peter **TOY** Joanne **TOYNE** Kenneth **TRACY** Valerie **TRING** Paul **TRINIDAD** Marina **TROITSKY** Diane **TULLY** David **TURLEY** Paul **UHLMANN** Tineke **VAN DER ECKEN** Linda **VAN DER MERWE** Raphael **VAN DER WAAG** Brendan **VAN HEK** Pia **VAN RAVESTEIN** VANCOUVER ARTS CENTRE **Michael VANDELEUR** Eva **VARGA** Michelle **VARNAVIDES** Robyn **VARPINS** Adele **VARRIS** Patricia **VERMAN** Rick **VERMEY** Jeanette **VERNOOIJ** Tunya **VERSLUIS** Pascal **VEYRADIER** Joie **VILLENEUVE** Francesco **VILLICICH** Pattie **VINCENT** Jana **VODESIL-BARUFFI** Lynnette **VOEVODIN** Joanna **WAKEFIELD** Kerrie **WAKEFIELD** Peter **WALES** David **WALKER** Justin **WALLACE** Karin **WALLACE** Vanessa **WALLACE** Susie **WALLER** Anne **WALMSLEY** Betty **WALSH** Don **WALTERS** Robyn **WALTON** Annie **WANG** Bob **WARDELL** Trish **WARE** Jillian **WARNOCK** Robin **WARREN** Bridget **WATERS** Vincent **WATHEN** Jodie **WATKINS** Margot **WATKINS** Anna **WATTS** Jody **WATTS** Diana **WEBSTER** Renee **WEBSTER** Carol **WELLS** Mark **WELSH** Rebecca **WESOLOWSKI** Gemma **WESTON** Kath **WHEATLEY** David **WHISH-WILSON** Brian **WHITE** Carolyn **WHITE** Gregory **WHITE** Lisa **WHITE** Pauline **WHITE** Frances **WHITEHEAD** Jane **WHITELEY** Tim **WHITEMAN** Jenny **WHITMORE** Ashleigh **WHYTE** Annette **WIGUNA** Nicholas **WILD** Lauren **WILHELM** Bess **WILLIAMS** Cecile **WILLIAMS** Laura **WILLIAMS** Pauline **WILLIAMS** Russell **WILLIAMS** Susan **WILLIAMS** Timothy **WILLIAMS** Christopher **WILLIAMSON** Colin **WILLIAMSON** Natalie **WILLIAMSON** Marlene **WILLSON** Juliet **WILMOT-STONE** Alushia **WILSON** Gillian **WILSON** Josh **WILSON** Maureen **WILSON** Tony **WINDBERG** Rita **WINKLER** Shirley **WINSTANLEY** Michael **WISE** Penelope **WISE** Graham **WITHEY** Gabrielle **WOODHAMS** Soozie **WRAY** WRITING **WA** Jurek **WYBRANIEC** Rachel **WYDER** Robin **YAKINTHO** YAMAJI **ART** Melissa **YAP** Caitlin **YARDLEY** Janet **YATES** Jill **YELLAND** Aurelie **YEO** YINJAA **BARNI ART CENTRE** Christopher **YOUNG** Eve **YOUNG** Rima **ZABANEH** Julie **ZAPASA** Peter **ZAPPA** Ayesha **ZAYO HASSAN** Johanna **ZEELNBERG** Deborah **ZIBAH** Helena **ZIELINSKA** Sophia **ZIELINSKI** Rachel **ZIMMERMAN** Gisela **ZUCHNER-MOGALL** Len **ZUKS** Peter **ZUVELA** ☺

artConnect



The Australian Trade
Commission (Austrade)

Western Australian Trade
Office (Government of
Western Australia)
Dubai

Studios + Residencies



Event sponsors



artsource: the artists foundation of WA Ltd

King Street Arts Centre Old Customs House
1st Floor, 357 Murray St 8 Phillimore St
Perth WA 6000 Fremantle WA 6160

t: (08) 9226 2122 t: (08) 9335 8366

f: (08) 9226 2180 f: (08) 9335 3886

info@artsource.net.au www.artsource.net.au

Post Office Box 999, Fremantle WA 6959