



artsource

Annual Report
2015

Contents

Artsource is the peak membership body for visual artists in Western Australia. Our vision is of a world in which culture and the arts are valued as vital and where visual artists flourish.

Our purpose is to engage with and support Western Australian visual artists with practical, affordable and relevant services. We also work with partners delivering and supporting initiatives that lead the way in creating the environment where art is valued and artists can flourish.

We are not-for-profit and supported by government, businesses and many committed individual donors and patrons.

Our values

- Artists are at the heart of everything we do.
- Our belief in artists and the contribution they make to the world is absolute.
- We listen, so that our actions are researched, planned and evaluated.
- We lead by understanding the evolving collective needs of artists.
- Quality, affordability and relevance are key traits of the services we offer.
- Acknowledging our various audiences, we communicate appropriately with each.
- Partnerships with others help us to do more. We don't always have to go it alone.
- We work to bring new audiences and participants to artists and their work.
- Our company and its finances are properly and efficiently managed.
- We operate ethically and openly.

2	Board of Directors
3	Chair's Report
5	Chief Executive Officer's Report
6	Membership Services
10	Studios
13	Residencies
15	Membership Development
16	Consulting Projects 2015
17	ArtLease 2015
19	Fundraising
20	Statement by Members of the Board
20	Independent Auditor's Report
21	Finances
22	Profit and Loss Statement 2015
23	Balance Sheet 2015
24	Thank You
25	Our Current Team
25	Artsource Members + Associates 2015

Cover

Tony Jones, Ben Jones, Angela McHarrie, *Imaginarium*, 2015.
Ronald McDonald House. Photographer: Eva Fernández

Board of Directors

Miik Green

Chair

Miik Green is a Western Australian artist and researcher, whose practice extends over 20 years. Miik draws inspiration from the microscopic aspects of nature, and is interested in cross-disciplinary initiatives that involve the fields of art, science, mathematics, chemistry and physics. His work is represented in major collections nationally and private collections overseas. He is focused on creating new opportunities for Perth-based artists and is the founder of *Studio Night*, an annual series of art-related talks. Miik has completed a PhD at Curtin University of Technology and is an associate editor of the *International Journal of New Media, Technology, and the Arts* and the *International Journal of Social, Political and Community Agendas in the Arts*. Miik is an Artsource Patron, has been a Board member since 2013 and Chair since May 2015.



Corine van Hall

Deputy Chair

Corine van Hall has worked in the arts industry for over 25 years as a practitioner, project manager and exhibition coordinator. She is currently an Art Coordinator for the State Percent for Art Scheme and Public Art Coordinator for the City of Fremantle. Prior to this, Corine was the Manager for the Mark Howlett Foundation (2007-2009), Exhibition Coordinator at Fremantle Prison (2005-2007) and the Art Gallery of WA (2003-2005), Special Events City of Joondalup (1999-2004) and Centre Manager, Tresillian Community Centre (1998-1999). Corine has been a Board member since 2012 and Deputy Chair since May 2015.



Mal Di Giulio

Treasurer

Mal is Managing Director at Nexia Perth, a financial advisory firm that provides a wide range of financial and business advice. The company was established in 1976 and employs 100 people. Mal's involvement with Artsource commenced when he became a Patron in 2009; he has extensive financial experience and is keen to further his involvement with the artist community. Mal is an Artsource Patron and has been a Board member and Treasurer since 2012.



Lisa Green

(from May 2015)

Lisa has been involved in the visual arts in WA as both a practitioner and administrator for over 28 years.

She has extensive experience working with artists and visual art collections in curatorial, collection management, education and professional development with the Curtin University of Technology Art Collection and John Curtin Gallery, developing and presenting Professional Development Programs for Art on the Move, the National Exhibitions Touring Structure for WA and as Manager of Membership Services at Artsource.

Lisa has dedicated herself to further study and has completed both Bachelor of Fine Arts and Education degrees and holds a Juris Doctor. Lisa has worked in several intellectual property firms over the past several years, has taught in the Murdoch University Law School and Fashion Business courses at Polytechnic West and currently works in the State Solicitor's Office.

Lisa is passionate about her continuing contribution to the visual arts through advocacy and support for visual arts practitioners through the vital work of Artsource, as the peak body for visual arts in WA.



Anthony Hasluck

Anthony Hasluck is Managing Director of Clarity Communications, one of Perth's largest commercial creative companies. Clarity's team of consultants provide public relations, graphic design and digital creative services for a range of major Western Australian, national and international clients. Anthony's daily involvement in the creation and application of design and digital services has given him a deep interest in all aspects of the visual arts and the commercial interests and value of creative people. He is also a Director of a State Government agency and previously a number of substantial private companies in the metals, recycling and transport industries. Anthony is an Artsource Folio Patron, has been a Board member since 2007 and Chair from 2012 to 2015.



Sue Starcken

Sue has an extensive visual arts background in Western Australia. Since graduating from Edith Cowan University with a Bachelor of Arts (Visual Arts), Honours Degree in 2001, and Masters of Medieval and Early Modern Studies from the University of Western Australia, Sue has worked as a lecturer in Art History, Critical Theory, Professional Practice and Printmaking at Swan TAFE. She continues to lecture in Cultural History and Theory at Edith Cowan University. She has written for publications and recently commenced her current position as Art Collection Curator for the ECU collection. A renowned printmaker, Sue's unique and complex etching process, which references history, memory and states of being, appears as symbolic language. Sue has been a Board member since 2014.



Paola Anselmi

(until May 2015)

Paola Anselmi is a Perth-based visual arts and public art curator and arts writer. Currently a PhD student at the University of Western Australia, Paola is a regular contributor to Australian arts publications and has published numerous exhibition catalogue essays. Over 25 years she has held curatorial and research roles at the Art Gallery of WA (1989-96), Royal Perth Hospital Art Collection (1996-06), Centre for Contemporary Art, Luigi Pecci, Prato, curated a number of exhibitions as a freelance Curator and undertaken public and private collection development and public art projects. Paola has served on the Mark Howlett Foundation board (2000-10), the Art Angels Inc. (2000-11), Museums Australia, WA (1993-99) and the Royal Perth Hospital Art Committee (2007-13). Paola was a Board member from May 2013 to May 2015.



Chair's Report

“In the age of globalisation, artists are its canaries in the coalmine and we are struggling for breath.”

DAVID PLEDGER



Visual artists are at the heart of everything we do, and this support remains the foremost priority of our three-year strategic plan. We all play a vital role as individual artists working in Perth, together enhancing the cultural fabric of Western Australia. My hope is that our contribution to the arts sector will yield new opportunities and raise our national profile as a leading arts organisation.

I would like to acknowledge the Department of Culture and the Arts for their commitment to Artsource and their ongoing endorsement of the work we undertake for the visual arts here in Western Australia. As you will read in this Annual Report, Artsource achieved much for our members in 2015 despite a challenging funding environment, made considerably more complex and uncertain by the Federal budget cuts. Our commitment to advocacy extended to representing our members at the Senate hearings in response to the cuts made to the Australia Council by the then Minister for the Arts, Senator the Hon George Brandis QC. This action galvanised the arts sector and Artsource worked with, and spoke alongside, other leading arts organisations across Western Australia.

It is clear that there is insufficient money in the system for arts and culture, as individual artists, Artsource and other small-to-medium arts organisations face similar financial pressures. We are working hard to raise funds elsewhere, notably the private sector and other sources. 2016 and beyond looks to be interesting as we redefine our membership tiers, look at the possibilities within Old Customs House, and explore new projects.

My thanks to our supporters, our fantastic staff, and my fellow Board members, who have all worked hard to deliver our objectives in 2015 and establish a solid platform from which to operate in the future. I congratulate our CEO, Gavin Buckley, on his leadership through a testing period for Artsource and for other arts organisations, and applaud his initiative in our restructure that has provided Artsource a renewed stability and focus. I would also like to acknowledge the input of Yvonne Holland, our former General Manager and welcome our new membership heads, Kate Roberts and Jane King.

Finally, I would particularly like to thank Anthony Hasluck, who Chaired Artsource with great skill and commitment from 2012 to May 2015 and has provided both Artsource and myself with many years of wisdom and clarity.

Miik Green

Chair

Chief Executive Officer's Report

With membership numbers up, 2015 saw the successful delivery of our member service and other targets, in line with the Board's strategic business plan. Artsource secured fresh three-year funding from DCA and we again returned a small financial surplus, although this was lower than hoped, due to increasing challenges presented by the fundraising environment.



Member events, including professional development and 6x6 artist talks, increased substantially in 2015 with over 540 attendees at 21 events during the year. Studios continued as a vital part of our work

with 76 studios offered across six buildings. Our consulting projects delivered almost \$1,950,000 in artist fees and a further \$49,600 was realised for members by ArtLease. Online, our gallery database of PLUS and MAX members has become the most visited section of our website and together with the magazine has led to a monthly average of over 10,500 unique page views. These are just a few of the activities detailed in this Annual Report.

A major piece of work in 2015 was to apply for three-year funding through the new Organisations Investment Program offered by the Department of Culture and the Arts (DCA). We had laid some foundations for this when we successfully secured 12 months of funding, under the DCA's former grants model, for 2014. Our 2016 to 2018 strategic business plan continues to have visual artists at its heart and reaffirms our vision of a world where culture and the arts are valued as vital and visual artists flourish. This strategic plan formed the cornerstone of our application to DCA, which again included a number of key additional strategic actions for which we were requesting extra funds to help make them happen.

The initial round of the Organisations Investment Program was highly competitive with DCA able to offer funding to 52% of applicants. Whilst I am delighted to report that our application was successful, it was, of course, disappointing that there was no money available for our additional strategic actions. The DCA acknowledged the important role Artsource plays in the visual arts sector and commended the organisation for its strong and expansive membership base, the valuable resource provided by our studios and noting that we are a soundly run organisation with clearly identified and achievable aspirations and objectives.

We acknowledge with thanks the ongoing support of DCA whose annual investment in Artsource is a vital part of our funding mix. The financial environment remained difficult for the arts in 2015 and Artsource was no stranger to the tougher times facing Western Australia. Nevertheless, we maintained membership fees at 2014 levels and sought to raise funds from other sources to achieve a small surplus for the year. The additional strategic actions for which extra DCA funds were not available are still in our sights, however, we need to work hard to find other ways to fund them and bring them to life.

Towards the end of the year we made some important changes to the way we organise our team, not least to put more resources into Membership Services and give us greater focus and increased team collaboration on service development and delivery. Further, we pulled together our consulting, ArtLease and fundraising activities into one team, focused on developing paid work and other opportunities for members. Following a rigorous recruitment and selection process, running into 2016, I was delighted to welcome Kate Roberts as our new Head of Membership Services and Jane King as Head of Membership Development.

We are immensely grateful to all our patrons, donors and sponsors who help support our work. With static public funding and a challenging economic environment the role played by these friends and supporters is vital if we are to grow what we do for our members. Rio Tinto agreed to help fund the first book in our Folio Project and we are still seeking funds for similar publications, also focused on living artists in Western Australia. The fundraising challenge is substantial, but we have some exciting projects on the list and a refocused development team to build on the work undertaken to date. We are also seeking to strengthen ArtLease to benefit more artists and raise sponsorship for the website. New website developments will build on the artist gallery database and magazine, introduced in 2015, to include a full visual arts events listings, member news section and fully responsive design.

Congratulations and thanks to Miik Green for taking on the role of Chair. I echo Miik's thanks to the Board who together volunteer much time, resources and considerable expertise to help

drive Artsource. On behalf of us all I thank, in particular, Anthony Hasluck who gave a great deal to the organisation as Chair from 2012 to 2015. Personally, it was a privilege to work with him as Chair and, although he has now handed over to Miik, it is great that Artsource continues to benefit from his energy and wisdom on the Board.

I thank the team. The success of Artsource is dependent on their hard work and we are fortunate to employ dedicated and passionate people who bring a wide variety of skills and experiences to Artsource. Our long-serving General Manager, Yvonne Holland, left us towards the end of 2015 and I thank her for her commitment, in various roles, over some eleven years with Artsource.

With 2015 successfully behind us, our DCA funding is now confirmed to 2018, our clear and refreshed strategic business plan is in place and our refocused team structure, including increased resources for membership services, is up and running. I am looking forward to working with everyone on the team (our members, Board, staff and supporters) to drive Artsource forward, centred on the visual artists of Western Australia, to deliver on our plans for the next three years and to work together to find the additional resources needed to grow our member services and develop new opportunities to meet evolving needs and increasing demand.

Gavin Buckley
Chief Executive Officer



Membership Services

Artsource is Western Australia’s peak membership body for visual artists. We provide our members with timely information, professional development, employment opportunities, advice and on-going support to assist in sustaining and growing their professional arts practice.

Artsource assists visual artists in many ways, such as:

- Providing relevant professional development workshops, resources, advice and information.
- Connecting artists to income earning opportunities and helping them maintain a public profile to encourage commissions, sales and jobs in the arts sector.
- Represent the interests of our members in discussions and negotiations with stakeholders and funders, looking for new opportunities as well as nurturing existing relationships.
- Promoting and supporting best practice in the engagement of artists across a broad range of professional visual arts opportunities.

Our artist members

Artsource members continue to be active in the local, national and international visual arts arena, contributing news of exhibitions, residencies, art prizes and awards and a broad range of public and private commissions throughout the year. 2015 saw an overall growth in the number of Artsource members, with a marked increase in artists taking up the MAX offer, with its public liability insurance.

Graduate members

Artsource awarded over 50 Graduate ACCESS memberships to students from Curtin University, Edith Cowan University and the Central Institute of Technology this year. The following graduates won the *Artsource Industry Award* of a free PLUS membership, in recognition of their readiness to take up professional opportunities in the visual arts:

- Paige Alderdice, Curtin University
- Sophie La Maitre, Edith Cowan University
- Susan Roux, The Central Institute of Technology

Information, advocacy + advice

Artsource provides relevant and timely guidance to members on all aspects of building and sustaining a professional visual art practice. To deliver this, we work with a variety of respected local and national organisations. Artist members are regularly referred to:

- The Arts Law Centre of Australia for legal advice on copyright and moral rights issues;
- The National Association for the Visual Arts (NAVA) for help to appropriately value work and determine fees for professional services;
- Other Arts Organisations – where their core activity can better support the artist;

- Local, State and Commonwealth government bodies that can support artists in pursuing opportunities in local, state or international spheres. This includes Department of Culture and the Arts and the Australia Council for the Arts;
- State, National and International Institutions and Galleries for more specific advice associated with each institution’s core activities and programs;
- Other members with a wide range of professional advice that they can share with their peers.

In August 2015, Artsource surveyed its members to gather statewide evidence from working artists of the likely impact of Commonwealth government budget decisions on the arts. The survey was carried out as part of our contribution to the Western Australian response to the Senate committee inquiry on the matter.

Member communications

Artists are at the heart of what we do and communicating effectively with our members is key to the delivery of services; providing accessible, up-to-date, and relevant professional information from a variety of art and industry sources.

2015 saw us revamp our weekly and fortnightly e-zines for members and associates, *ArtLines* and *ArtLeads*. We also upgraded *ArtConnect*, promoting our members and their work to potential clients and introduced *ArtLights* to keep our patrons and donors up-to-date with Artsource and how their support is making an impact. All these regular communications use *MailChimp* and *Eventbrite*, to help better deliver and track our communications.

The website is a cornerstone of our communications and now attracts over 10,500 unique page-views monthly. The online Artsource Magazine presents regularly updated features, opinions and news about visual art and the artists of Western Australia and is where you will find our *Artist Features*, *Articles* and *Residency Reflections*.

The Artsource online Artist Gallery now features over 270 individual artist profiles and this number increases monthly. This valuable service – available to our PLUS and MAX members – gives professional artists the opportunity to have their own page on the website; where potential clients can search for and read profiles, view images of work and build an understanding of the artists of Western Australia. The Gallery has become the most visited section of our website.

Professional development + networking

In 2015, Artsource delivered 21 professional development events for members, including workshops and artist talks. The talks and workshops were hosted in inner and outer metropolitan areas as well as in regional Western Australia. Over 500 artists attended Artsource sessions and networking opportunities. These included a social event at the Rosemount Hotel, our annual Open Studios in Midland and Fremantle, and partnerships with the Arts Law Centre of Australia and Celebrate WA. The full list of the professional development and artist talks hosted in 2015 is given overleaf.

Regional and Indigenous artists

An increase in demand for public art in Perth and across Western Australia saw regional and Indigenous artists stretched to capacity with some indigenous art teams working across three or more projects. Waringarri Art Centre, in partnership with Artsource and Landcorp, launched the Boab Project, showcasing the skills of local artists in wood and boab carving. Oversized bronze boabs joined carved wooden poles in a major artwork in a new housing development in Kununurra.

Rio Tinto

Six Pilbara regional artists attended professional development in Perth, learning how to develop online profiles and how to represent themselves as artists to potential clients, buyers and colleagues. The Ngurrawaana Aboriginal community, supported by Yindjibarndi Aboriginal Corporation, established a new art centre and engaged Carrie McDowell, an Artsource artist member, to help research and develop a new technique using local ochre.

Artists from Roebourne are working with Artsource on developing their professional profiles in our Artist Gallery. Artsource assisted with arts activities in the Cheeditha Community, just outside Roebourne and continued to support the Perth Rio Tinto *Colours of Our Country* Exhibition held annually in Central Park. It was confirmed in 2015 that Rio Tinto will partner with Artsource to develop a major publication celebrating the Indigenous Artists of Western Australian.

Ongoing support to artists was provided this year in Geraldton, Albany, Leonora, Kalgoorlie, Bunbury, Busselton, Exmouth, Carnarvon, Morawa, Three Springs, Denmark, Margaret River, Tom Price and Broome.



↑ View of Portrait Category, including far left *Wise Eyes* by Katherine Brown, Winner, People's Choice Award, 2015 Cossack Art Awards. Image: Pilbara Site Pics
➤ Kati Thamo artist studio visit, Albany, 2015.

➤ Ignite Closing Exhibition at Brookfield Place Lobby, 2015
➤ Antony Muia's Artsource Midland Studio, 2015. Photographer: Christophe Canato



Event	Number of attendees
Professional development workshops	
<i>Consulting Masterclass #1</i> at Fremantle Arts Centre Artists and presenters: Maggie Baxter and Jill Stiely.	9
<i>Consulting Masterclass #2</i> at King Street Art Centre Artists and presenters: Marie Mills, Marie Wong, Phil Gamblen, Alexandra Turner and Laura Tatchell.	12
<i>Consulting Masterclass #3</i> at Bar Orient Artists and presenters: Marc Abonnel, Geoffrey Drake Brockman, Phil Gamblen, Maggie Baxter and Evolution Commercial.	11
<i>GST, Tax and Business Basics</i> at Kings Street Art Centre Presenters: Sabina Moncrieff and Bob Poolman.	44
<i>One-on-one mentoring sessions by artists for artists</i> at PS Art Space Mentors: Olga Cironis, Rick Vermey, Rebecca Baumann, Tom Müller, Lucy Griggs, Tanya Schultz and Sarah Nelson.	16
<i>Developing your Artsource Online Artist Profile</i> at Old Customs House Presenters: Anna Richardson, Sue-Lyn Aldrian-Moyle and Yvonne Holland.	20
Artist Talks and Workshops	
<i>Creative practice in a regional area, diversifying and maximising opportunities</i> at Vancouver Arts Centre Artists: Sue Codee, Kati Thamo, Michael O'Doherty, Indra Geidans, Annette Davis and Tania Spencer.	13
<i>Irrational Geometrics</i> at King Street Art Centre Artists: Pascal Dombis and Gill Percal.	30
<i>City of Armadale Artist Talks and Community Workshop</i> at City of Armadale Artists: Alister Yiap, Leanne Bray, Paul Caporn and Kathy Allam.	34
<i>Cossack 6x6</i> at Pam Buchanan Family Centre Artists: Joshua Cocking, Bojana Krstic, Yianni Johns, Donna Duque, Carrie McDowell and Stuart Evans.	15
<i>Basel Artist Talk</i> at Old Customs House Residency Studio Artist: Katrin Herzner	5
<i>Ignite Initiative Q&A</i> at Brookfield Place Lobby Artists: Eva Fernández, Olga Cironis, Stuart Elliott, Christopher Young and Katie West.	35

↑ Anna Richardson, *Flatland*, 2015. Image courtesy of the artist.



Event	Number of attendees
<i>What have you been up to?</i> at John Curtin Art Gallery Artists: Tim Burns, Thea Costantino, Abdul-Rahman Abdullah, Shannon Lyons and Joanna Lamb.	70
<i>Winner</i> at Turner Galleries Artists: Caspar Fairhall, Nigel Hewitt, Iain Dean, Peter Dailey and Paul Kaptein.	60
<i>Experimental art, presented SymbioticA's CRINGE</i> at UWA Artists: Vjzoo, Snapcat, James Berlyn and Fiona Gavino.	21
<i>Unpacking TILT</i> at Heathcote Museum and Art Gallery Artists: Tom Müller, Paul Caporn, Eva Fernández, Holly Story, Andy Quilty and Merrick Belyea.	15
<i>Meeting place of the heart</i> at Mandurah Library Artists: Liam Dee, Stuart Green, Philip Gamblen and Simon Gilby.	25
<i>Public Art Community Workshop</i> in Carnarvon Artsource Consulting Team.	30
<i>Community Art Award Development</i> in Exmouth Artsource Consulting Team.	33
<i>Revealed: Indigenous Showcase 2015</i> at Central Institute of Professional Development for Aboriginal Art Centre Managers.	23
<i>WA Day – Artist Talks</i> at PICA and AGWA On behalf of Celebrate WA.	20

Artsource Membership 2011-2015

	2011	2012	2013	2014	2015
Max	380	338	427	424	527
Plus	230	209	185	172	165
Access	265	352	290	293	275
Total	875	899	902	889	967
Associates	96	107	71	74	78

↑ Pilar Mata Dupont, *The Embrace*, 2013. Single-channel high definition digital video 5:04min, colour, sound. Image courtesy of the artist.



Studios

Artsource Studios provide professionally-managed and affordable working spaces for artists at all stages in their careers. Studios play an essential part in the advancement of professional non-commercial artists.

There are 76 Artsource Studios contained in six buildings across the metropolitan area. Our studios provide a supportive environment for artists to take risks, to develop ideas and to make the work that drives them.

Guided by our significant research, *Artists’ Studio Provision – A New Vision for Western Australia*, in 2015 we set out to address the report’s recommendations. Developing studio complexes that have relevance to our artist members; security of tenure; affordability and advocacy in relation to artists’ needs are paramount drivers in relation to this work.

There is widespread support for Artsource to continue to play a major role in studio provision across the State, alongside maintaining a variety of services for artists¹

¹ *another* Project Space launch at Artsource Ashfield Studios, 2015. Photographer: Duncan Wright
² Frances Spence’s studio, Artsource Fremantle Open Studios, 2015. Photographer: Christophe Canato

Artsource Fremantle Studios

Since 1986, significant spaces in the beautiful Old Customs House building in Fremantle have been offered to over 200 professional artists. 24 individual studios, a studio residency apartment and our administrative offices make up this much-loved and highly coveted studio complex.

Artists in studios

David Attwood	Clare Peake
Sebastian Befumo	Steve Richter
Elaine Bradley	Matt Scurfield
Kate Campbell-Pope	Frances Spence
Clare Detchon	Ric Spencer
Louise Dickmann	Michelle Lee Tindale
Tom Freeman	Rick Vermey
Maria Hildrick	Don Walters
Digby Hill	Audrey Welch
Josh Hogan	Katie West
Simone Johnston	Gera Woltjer
Amanda Marsh	Bizircus
Lucille Martin	Circus WA
Justin McArdle	
Sarah Nelson	

Artsource Midland Studios

Seventeen studios and a fantastic artist-run shop now occupy a former boarding house in the centre of Midland. This intriguing building has been managed as a studios complex by Artsource since 2009.

Artists in studios

Hayley Campbell	Tanya Stewart
Kelli Cross	Mark Storen
Melanie Diss	Criss Sullivan
Robert Dorizzi	Marisa Tindall
Libby Guj	Arron Yarron
Mal Harry	Leah Tarlo’s Found Institute
Tracey Hart	
Julie Hein	
Pablo Hughes	
Chris Lawrence	
Elwyn Marren	
Gayle Mason	
Graeme McCullagh	
Antony Muia	
Cynthia Payne	
Deborah Ralph-Kafarela	

Rosemount Studios, North Perth

Our partnership with Perth’s most vibrant music venue is now in its third year, with eight rooms above the Rosemount Hotel housing artist studios. Opportunities to reinvigorate underutilised spaces close to the city are relished by artists and Artsource welcomes the chance to work with building owners to make these transformations occur.

Artists in studios

Thea Costantino	Jacqui Monks
Tarryn Gill	Debbie Oakley
Dan Gladden	Sally Stewart
Marijke Loosjes	Mark Tweedie
Elizabeth Marruffo	Hannah van Didden
Chris McClelland	Clarice Yuen

Haig Park Studios, East Perth

Four artist studios were incorporated into this Foundation Housing development in East Perth when it was built in 2001. The complex includes apartments for two of the studio artists that meet the housing eligibility criteria.

Artists in studios

Luci Foresi	
Patricia Newman-Bruton	
Marzena Topka	
Rizzy	

New Studios – Artsource Ashfield

This spacious, two-storey building had been empty for many years before Artsource took on the lease. Sixteen individual studio spaces on five-year leases have been developed in the complex and were filled in only three weeks – a clear demonstration of the constant demand for affordable artist working spaces.

In response to the decline of exhibiting spaces for artists in the metropolitan area, an area of the studios complex was made available for an artist-run-initiative. *another* Project Space commenced in 2015 and encompasses a gallery space that is used for four-to-six-week onsite artist residencies. The space is a welcomed addition to the gallery and artist-run sector and will continue into 2016 with an expanded schedule of events.

Artists in studios

Darryn Ansted	Nick Mahony
James Berlyn	Caroline McGrath
Kirsten Biven	Belinda Morris
Kerry Cullinan	Lucy O’Dea
Giovanni Di Dio	Rory Dax Paton
Shona Erskine	Perdita Phillips
Ayako Goto	Vanessa Russ
Nigel Hewitt	Joie Villeneuve
Adam Ismail	Laura Williams
Sue Leeming	<i>another</i> Project Space

An artist studio is a place where ideas are developed, where an artist can pursue their career goals. It is a space that can safely absorb failures while allowing achievements to soar . . . it is always a necessity for an artist, regardless of practice, medium or stage of career.²

New Studios – Dickmann Studios, O’Connor

Our newest studio complex was developed with sculptural or 3D practices in mind, offering a substantial workshop space with excellent access to artist members working in these mediums.

Artists in studios

Lisa Dymond	Lorraine Spencer
Angela McHarrie	Pichette
Karen Millar	Sarah Wilkinson
Pascal Proteau	



^{1,2} *Artists’ Studio Provision. A New Vision for Western Australia*, Artsource and Black Radley, 2014



Residencies

Artsource Residencies give artists the time and space to develop their work and careers away from their day-to-day routines and responsibilities.

Artsource manages two important residencies with funding from the Department of Culture and the Arts:

Artsource Basel Exchange Residency, Switzerland

This significant residency places a Western Australian artist in the heart of cultural Switzerland, offering easy proximity to a wealth of arts experiences both in Basel and surrounds. Theo Koning became the 27th artist to embark on the Basel Exchange Residency, spending six months in the newly built *Atelier Mondial* in Dreispitz. As part of the exchange program, Freiburg-based artist Katrin Herzner called Fremantle home for six months, making the most of her time in the Artsource Fremantle studio apartment. Katrin's visit included an open studio exhibition and an artist talk led by Dr Perdita Phillips.

Artsource Artspace Residency, Sydney

Based in the historic Gunner Building in Woolloomooloo, the Artsource Artspace Residency began in 1995. Each year, the residency gives a Western Australian artist the opportunity to engage with the arts sector in Sydney. In 2015, Teelah George spent three months at Artspace developing ideas and new work.

Many times a residency experience is only the beginning of a longer relationship. Residents often return to complete a project they started, to begin a new collaboration, or participate in an exhibition, panel or workshop.³

Artsource Fremantle Residency

In addition to housing the Basel exchange artist for six months, our large studio apartment in Fremantle is made available to artists from around the world throughout the year.



Artists hosted in 2015

- Katrin Herzner, Germany – Artsource Basel Residency Exchange with Christoph Merian Foundation in Switzerland
- Thurlie Wright, United Kingdom
- Robert Boynes, ACT – in conjunction with Art Collective WA
- Gosia Wlodarczak, Victoria – in conjunction with Art Collective WA
- Made Wianta and Jango Pramatha, Indonesia – in conjunction with the University of Western Australia
- Susan Milne and Greg Stonehouse, New South Wales
- Kate Daw, Victoria

Since returning, I realise it will take time to fully understand and appreciate the developments of the residency experience on my art practice. All of my expectations were realised and more.

THEO KONING, 2015 BASEL EXCHANGE ARTIST

The residency experience really fortified my relationship to place, history and the motivations behind making work. It offered a new way for me to see.

TEELAH GEORGE, 2015 ARTSPACE RESIDENCY ARTIST



Government of **Western Australia**
Department of **Culture and the Arts**



ARTSPACE



← Theo Koning, Basel Residency Exchange Artist studio at Atelier Mondial, 2015. Image courtesy of the artist.
 → Gosia Wlodarczak, *Dust Cover Artsource Studio – A (Kitchen)*, 2015. Situation performance drawing, pigment pen, acrylic on linen placed over object, 45 x 45 cm. Photographer: Longin Sarnecki. Image courtesy of the artist and Art Collective WA.

³ Sourced March 2016 from *resartis: worldwide network of artist residencies*: http://www.resartis.org/en/residencies/about_residencies/



Membership Development

Our Membership Development team fosters quality work and other opportunities for members through Artsource Consulting, ArtLease and Fundraising.

At the close of 2015 we implemented a revised structure to help deliver our new three-year strategic plan and to focus on developing new opportunities for members. The Membership Development team brings together our consulting and ArtLease operations with our private sector fundraising.

Consulting is a core service through which Artsource provides practical career-building support for our members. We work with clients to develop projects with artistic integrity whilst advocating for quality practices that are fair to artists. We strive to increase the diversity and quality of outcomes in art projects and work with commissioners and artists to explore ways to achieve this outcome.

We assist artists with the business aspects of commissions and public art processes and work with the corporate sector to find artists and artwork appropriate for their needs. We manage both permanent and temporary public art projects; facilitate private art commissions; run capacity building workshops; provide curatorial adjudication, and other professional services; contribute to the development of public policy artwork strategies and cultural planning and administer the lease or purchase of artwork. We work to build continuing relationships with clients for the benefit of artist members.

Capacity building and income earning opportunities for artists through our project management remained a key focus of our work and 2015 saw \$1,948,576 returned to artists as artists' fees.

Below, we highlight just some of our many projects that demonstrate the diversity of work that we undertake.

Kings Square

After developing the Public Art Strategy for the Kings Square Precinct in 2014, 2015 saw Artsource consult on a series of five site specific public art works for Leighton Properties. French artists, Gil Percal and Pascal Dombis, created the 'transition' artwork *Irrational Geometrics*. Sydney-based artist, Damien Butler, created the second transition artwork to remain *Untitled*, and Warren Langley was commissioned to conceive a feature light artwork titled *Connectus*. Queensland artist

Nicole Voevodin-Cash designed the play artwork *Ripplescape* and the commission for the Indigenous artwork *Koorden* went to local artists Rod Garlett, Richie Kuhaupt and Fred Chaney.

The Temporary and Ephemeral Program was initiated in late 2015, with respective projects scheduled for implementation during the first half of 2016. There are four opportunities for commissions going out to artists, whose briefs call for an interactive dance performance, a response to one of the permanent artworks installed in Kings Square, and an Aboriginal dance performance (Welcome to Country) coupled with the launch of the artworks in the precinct. The final work will respond to the 'past life' heritage of the site.

Ronald McDonald House

Artsource project managed the delivery of artworks for the new Ronald McDonald House in Nedlands. Designed by Gerry Kho architects, the building with its welcoming façade, indoor-outdoor gardens, communal spaces and central light well, carefully considers the psychological and emotional requirements of the families and their children. Upon entering the house, you are immediately struck by the use of natural light to create a calm, soothing environment for all.

On behalf of Ronald McDonald Charities, Artsource commissioned 13 artists/artist teams to create seven site-specific artworks for the building, purchased an outstanding collection of 83 2D artworks by 55 Western Australian artists and engaged three artists to each paint a mural within the House.

Positioned at the heart of the building is the kinetic sculpture *Imaginarium*. Created by Tony Jones, Angela McHarrie and Ben Jones, the artwork takes the form of a large mobile suspended within a tapered cylindrical glass light well. Spanning the diameter of the void and extending vertically over a distance of approximately six metres, the work is primarily visible on the second and third floors but also offers the viewer a 'kaleidoscope' perspective when seen from below. The glazed cylindrical form has visual links with aquaria and kaleidoscopes; objects that provoke the imagination and are sources of enduring fascination for both children and adults.

For Ronald McDonald House, *The Imaginarium* is the core of our new house. The creativity of the kids in the house has been magically captured and represented by Tony Jones and his team through the mobile artwork. It is a real centrepiece that attracts everyone to it and we are very proud to have it within Ronald McDonald House.'

Brookfield

In 2015, Artsource delivered a four-part temporary and ephemeral programme for Brookfield Place, a significant new commercial precinct in the Perth CBD. The artworks were a key element of Brookfield's place activation programme, and included *The Green Dream*, a sustainably-produced suspension artwork by Kathy Allam; *High Light*, a suspended, light-based artwork by Tom Müller; Christmas installation *Star Fall*, by emerging artist Alister Yiap; and tactile, wall-based installation *Geodetic Sprawl*, by Joanna Sulkowski.

ArtLease + Private Commissions

Our unique leasing and procurement service assists artists to gain exposure and receive ongoing income through the lease of artworks for Perth offices and both private and developer homes. Artworks are also made available for purchase. In 2015, ArtLease provided \$48,140 in income for 51 artist members. A total of 145 works were leased throughout the year to 12 different clients. See page 17 for a full list of ArtLease projects in 2015.

Artsource continues to build relationships with private collectors and promotes site specific commissioning for interior spaces such as Ronald McDonald House.

← Tony Jones, Ben Jones, Angela McHarrie, *Imaginarium*, 2015. Ronald McDonald House. Photographer: Eva Fernández

Consulting Projects 2015

Total income to artists: \$1,948,576

Alex Hotel Perth

A light artwork commissioned for a new inner city hotel

Client: Cicero Project

Artist: Joshua Webb

Atwell Arcade

Interactive, site-specific artwork for High Street, Fremantle

Client: Silverleaf Investments, City of Fremantle

Artists: Tom Müller, Ariane Palassis

Belmont Grandstand

Development of Pre-DA Strategy for the Belmont Park Racecourse Redevelopment

Client: Insight Projects/Perth Racing

Building 304, Curtin Research Facility

An integrated glass artwork referencing the activity of a new scientific research facility at Curtin University

Client: Curtin University of Technology

Artists: Tom Müller, Ariane Palassis

Bridgetown

A series of community engagement and public art projects by local Bridgetown artists

Client: The Schapper Family

Artists: Sandra Hill, Jenny Dawson, Russell Sheridan, Rodney Laws, Helen Seiver

Brookfield

A series of temporary and ephemeral artworks commissioned for Brookfield Place

Client: Brookfield Place

Artists: Alister Yiap, Kathy Allam, Joanna Sulkowski, Tom Müller

Celsius Developments

Two wall-based artworks for a new residential development in North Perth

Client: Celsius Developments

Artists: North Perth – Dawn Gamblen, Phil Gamblen, Peter Gee. Melville – artists not yet selected.

City of Geraldton

Development of Public Art Strategy

Client: City of Greater Geraldton

City of Mandurah

Development of Public Art Strategy

Client: City of Mandurah

City of Mandurah Yaburgurt Memorial

A community engagement and public art commission to commemorate the life and time of important historical figure, Yaburgurt

Client: City of Mandurah

Artists: Peter Farmer, Jason Hirst

Melville Memorial

Creation of artwork for the Wireless Hill War Memorial

Client: City of Melville

Artist: Arterial Design

Cloughton Reserve

Artist/architect team commissioned to deliver an artistic refurbishment of the Cloughton Reserve toilet block

Client: City of Bayswater

Artist: Duncan Moon

Coles Albany

A public artwork referencing Albany port city identity

Client: Coles Group Property Developments

Artist: Tania Spencer

Coolibah

Provision of public artwork for a residential development in Kununurra

Client: LandCorp

Artists: Waringarri Artists

Dalwallinu Freemason

A sculpture commemorating the Dalwallinu Freemason Lodge

Client: Freemason’s lodge #123, Dalwallinu

Artist: Mehdi Rasulle

Shire of Exmouth

Development of Public Art Strategy

Client: Shire of Exmouth

FJM Leederville

Public artwork at the Leederville Hotel location at the corner of Oxford and Newcastle Streets

Client: FJM Property

Artists: Kirsten Masgai, Chevi Hughes

Goodwood Parade

A functional 2-dimensional artwork inspired by the nearby lakes

Client: DevWest

Artist: Leanne Bray

Kings Square

A program of landmark public artworks for a new CBD precinct

Client: Leighton Properties

Artists: Rod Garlett, Richie Kuhaupt, Fred Chaney, Damien Butler, Warren Langley, Nicole Voevodin-Cash, Pascal Dombis, Gil Percal

Leach Hwy

Site specific, standalone artwork for Leach Highway

Client: Summit Development Corporation

Artist: Artist not yet selected

Leederville Rosewood

A series of seven small-scale artworks for the public areas of a new aged care facility

Client: Rosewood care group

Artists: Abdul-Rahman Abullah, Philip and Dawn Gamblen

LNG Booth, Department of State Development

Booth design that is based upon a pre-existing painting by Shane Pickett

Client: Department of State Development

Artist: Shane Pickett

Mainstreet Carnarvon

Development of Public Art Strategy for Carnarvon Main Street

Client: Shire of Carnarvon

Mary Street

A stand-alone sculpture for a new apartment complex in South Perth

Client: M/Group

Artist: Ayad Alqaraghooli

PerthFLUX

A series of temporary and ephemeral artworks commissioned to activate the area in and around the Barrack Street Precinct

Client: Perth Public Art Foundation

Artists: Renae Coles, Anna Dunnill, Phil Gamblen, Chris Cobilis

Perth Railway Station

An integrated artwork exploring the history of the site

Client: Perth Transit Authority

Artist: Peter Farmer

Peel Regional Gallery

A research report of A Class Galleries and a visioning session for a Peel Gallery

Client: Peel Regional Gallery

Hilton Hotel, Point St

Three separate public artworks for a new mixed-development building

Client: SKS Pty Ltd

Artists: Alister Yiap, Bevan Honey, Susanna Castleden, Anne Neil

Port Coogee, Maritime

A three-piece kinetic sculpture for a boat harbour referencing maritime themes

Client: Australand

Artist: Nigel Helyer

Richardson Street

An integrated artwork for a new mixed use development in South Perth

Client: DevWest

Artist: Leanne Bray

RMH Fitout

Artwork fitout for the new ‘home away from home’ for families with children in hospital

Client: Ronald McDonald House

Artists: Kathy Allam, Renee Barton, Yolande Bennett, Penny Bovell, Sue Codee, Jo Darvall, Jodie Davidson, Ian De Souza, Liam Dee, Michael Doherty, Mary Dudin, Peter Farmer, Eva Fernández, Susan Flavell, Andrew Frazer, Stephen Genovese, Francesca Gnagnarella, Jeremy Goodchild, Catherine Gordon, Naomi Grant, Alan Jangala Griffiths, George Haynes, Thomas Hoareau, Giles Hohnen, Bevan Honey, Annie Hsiao-Wen Wang, Amanda Humphries, Darren Hutchens, Jeremy



Kirwan-Ward, Anastaija Komarnykcyj, Theo Koning, Eveline Kotai, Benjamin Kovacsy, Pamela Langdon, Vania Lawson, Jane Martin, Lesley Meaney, Dragica Milunovic, Phyllis Ningamara, Amy Ngurnta Nuggett, Denise Pepper, Andy Quilty, Ben Reynolds, Trevor Richards, Jukuja Dolly Snell, Nyilpirr Ngalyaku Spider Snell, David Spencer, Sioux Tempestt, Sarah Toohey, Lisa Uhl, Trevor Vickers, Jana Wallace Braddock, Hayley Welsh, Audrey Tulimiero Welch, Laura Williams, Alister Yiap

Walcott St, Match

A two-dimensional public artwork referencing the culture and community of Mount Lawley, applied to the façade of a new mixed use development

Client: M/Group

Artist: Kyle-Hughes Odgers

Waterfront SKS

An integrated artwork referencing the river and city environment of Perth for a new hotel at Elizabeth Quay

Client: SKS Pty Ltd

Artist: Tom Müller

ArtLease 2015

Total income to artists 2015 – \$49,642

Ainslie Gatt Art Consultancy (AKER)

Miik Green

ANZ Private Bank

Dragica Milunovic Lisa Wolfgramm
Jana Wallace Braddock Miik Green
Jo Darvall

Artsource Fremantle

Andre Lipscombe
Christopher Hopewell
Don Walters
Artsource Perth

Ashurst

Helen Seiver
Holly Pepper
Ida Killigrew
Ivan Shaw
Jo Darbyshire

Aurecon

Francesca Gnangarella
Vania Lawson
Jo Darbyshire

City of South Perth

Annie Hsiao-Wen Wang
Eve Arnold
Jane Mackay
Jo Darbyshire

HIF

Carol Rowling
David Giles
Jacinda Bayne
Jean & June Pastore
Jennifer Sadler
Jill Bryant



Jana Wallace Braddock

Eva Fernández
Elisa Markes-Young
Andy Quilty

Joyce Syms
Kim Maple
Lesley Meaney
Nick Horn
Sue Codee

Alex Spremberg
Lindsay Harris
(via Emerge)
Miik Green

Jon Tarry

Kim Maple
Naomi Grant
Penny Bovell

Jo Darbyshire
Joanne Duffy
Lyn Franke
Penny Coss
Vania Lawson

Nexia

Annie Wang
Bevan Honey
Holly Pepper
Merrick Belyea
Miik Green
Minaxi May
Penny Coss
Peter Zappa

Riverstone – Clematis Road

Joe Duffy
Kim Maple

Riverstone – Mathieson Ave

Francesca Gnagnarella
Jo Duffy

Riverstone – Tomlinson Boulevard

David Spencer
Kim Maple

State Administrative Tribunal

Susanna Castleden
Eva Fernández
Inta Goddard

Stockland

Alex Spremberg

Telco

Andy Quilty
Francesca Gnagnarella
Miik Green
Penny Bovell
Penny Coss

Perron Group
Adam Derums
Kim Maple
Lesley Munro
Lyn Franke
Eveline Kotai
Ben Sewell
Helen Seiver

Miik Green

Penny Bovell

Vania Lawson
Jo Darvall

Lesley Munro
Vania Lawson

Elisa Markes-Young
Lyn Franke
Jean & June Pastore



Fundraising

Our patrons, donors and sponsors enable us to provide vital services and opportunities for visual artists in Western Australia.

It is with sincere thanks to our many patrons, donors and sponsors that Artsource is able to support West Australian artists. Every contribution this year has helped us provide the best possible services to more artists.

2015 marks the second year that Artsource has employed a full-time Development Officer to engage our current Patrons and supporters, while also seeking out and developing new relationships. Integrating our Development Officer into the new Membership Development team has created a world of potential for networking and relationship building, and this year has been a particularly successful period for establishing new relationships with businesses in fields such as finance, law, property development and resources. The new structure has already helped us to partner with sponsors for professional development events, such as fabrication demonstrations and our Public Art Masterclasses.

Our patrons are an important part of Artsource, and their passion for the visual arts makes it incredibly rewarding to involve them in the work of our members. Since welcoming our new Development Officer in April 2015, Artsource has held several events to engage our existing supporters.

- Patrons were treated to an exclusive artist talk at Turner Galleries by Artsource member John Cullinane, who shared the creative processes and subtle humour behind his work.
- To celebrate the successful conclusion of the Ignite Initiative, Artsource's highly successful artist mentoring program, a closing exhibition and event was held in Brookfield Place.
- Platinum patrons Frederic and Capucine Flipo invited Artsource guests into their home, sharing their art collection and experiences as lifelong collectors.



- Marking the official start of Artsource's first publication project, Folio Patrons joined Artsource, the Rt. Hon. the Lord Mayor Lisa Scaffidi and Professor Terri-Ann White of UWA Publishing for a Chairman's Lunch at Lamont's in Perth.
- In November, the annual Fremantle Open Studios event provided both patrons and the public with an opportunity to meet the artists of Artsource's Fremantle studios in their workspaces.
- The substantial Artsource Consulting project, Ronald McDonald House Perth, was enthusiastically opened for an exclusive art

viewing pre-launch. Patrons were invited to a breakfast held in the new House, to view the hundreds of artworks and meet the artists involved.

Artsource would also like to thank Liquor Shed Jandakot, Gage Roads Brewing Co and the Margaret River Dairy Company for their generous in-kind support for our events throughout 2015.

Statement by Members of the Board

The Board has determined that the company is not a reporting entity and that this special purpose financial report should be prepared in accordance with the accounting policies outlined in the financial statements.

In the opinion of the Board the financial statements as set out in the audit:

- Presents a true and fair view of the financial position of Artsource The Artists Foundation of Western Australia Limited as at 31 December 2015 and its performance for the year ended on that date.
- At the date of this statement, there are reasonable grounds to believe that Artsource The Artists Foundation of Western Australia Limited will be able to pay its debts as and when they fall due.

This statement is made in accordance with a resolution of the Board and is signed for and on behalf of the Board by:

Miik Green
Chair

19 April 2016

Mal Di Giulio
Treasurer

19 April 2016



Independent Auditor’s Report

We have audited the accompanying financial report, being a special purpose financial report, of The Artists Foundation of Western Australia Limited, which comprises the balance sheet as at 31 December 2015, the income and expenditure statement for the year then ended, notes comprising a summary of significant accounting policies and other explanatory information and the statement by members of the Board.

Auditor’s Opinion

In our opinion, the financial report of The Artists Foundation of Western Australia Limited is in accordance with the Corporations Act 2001, including:

- (i) Giving a true and fair view of the Company’s financial position as at 31 December 2015 and of their performance and cash flows for the year ended on that date; and
- (ii) Complying with the Australian Accounting Standards.

Name of Firm: PSZ Tax Pty Ltd
CPA

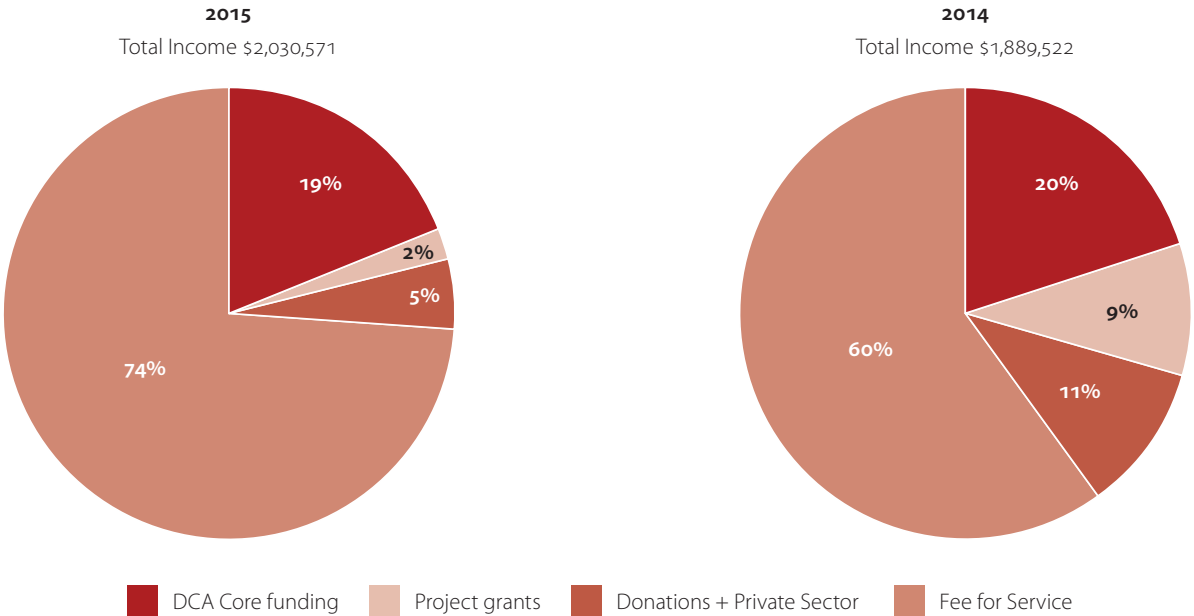
Name of Partner: Dino Penaranda

Address: Unit 9, 21 Roydhouse Street, Subiaco WA 6008

Dated: 31 March 2016

Finances

Sources of Income



Sources of Income

Artsource services and activities are primarily funded by fees-for-service and Department of Culture and the Arts (DCA) grants. These services and activities continued to deliver steady and consistent results in 2015.

It is reasonable to assume that fees-for-service income will not increase significantly in the short to medium term. The DCA funding for 2016-2018 is confirmed and remains at the same level. In order to develop our capacity and increase our services and activities we are focusing on building more partnerships with the private sector through sponsorships and donations.

In 2015 we maintained our focus on building our capacity to fundraise. All other activity continued to deliver good and steady results. The key financial items and variations from 2015 include:

Total turnover remained steady at \$2,030,571.

There was a small surplus for the year of \$2,370; with equity increasing to \$83,119.

Fee for Service income from our core activities continues to generate the majority of our income at \$1,497,665 – 74% of turnover.

Our core-funding grant from the Department of Culture and the Arts (DCA) increased moderately to recognise inflation. This grant represents 19% of our turnover.

Our partnership with Rio Tinto continued through 2015. This partnership supports the work of our Regional + Indigenous Development in the Pilbara and will fund the first of the Folio publications.

Consulting Management Fees increased by 6% to \$333,786 due to several large projects being completed during 2015.

Project Income increased substantially in 2015, however this doesn’t reflect an increase in activity. It is due to Artsource managing the artists’ budgets for more Consulting projects. There is a corresponding increase in Artists Fees & Commission payments, again due to artists being paid by Artsource rather than directly by the client.

Expenditure on salaries increased modestly to \$821,934. There were several staffing changes throughout 2015 and we go forward with 12 members of staff; eight full-time and four part-time (10.75 full-time equivalents).

The future

Our current level of activity is primarily funded through fee-for-service and DCA income, with some support from project grants and private sector partnerships. It is a healthy financial framework that we are not unduly reliant on one external funding source. The focus for 2016 is to increase partnerships with the private sector through donations and sponsorship. This has the potential to provide additional funds for us to meet growing demand for services and support new initiatives.

Paul Kaptein, *black holes > wormholes > portals + potholes* exhibition at Turner Galleries, 2015

Profit and Loss Statement 2015

INCOME	2015 \$	2014 \$
Grants		
Department of Culture & the Arts – General Purpose Grant	388,542	382,552
Department of Culture & the Arts – Artist Residency Grants	42,224	41,848
Department of Culture & the Arts – Strategic Funding	–	35,000
Lotterywest	–	100,000
Regional & Indigenous Development		
Rio Tinto	47,000	85,285
BHP Billiton		40,000
Donations & Interest		
Patrons + Small Donors	10,085	15,553
Major Donors – Foundations	–	20,000
Major Donations – Corporate	–	10,000
Folio – Donation Component	9,000	25,000
Folio – Fee for Benefit	15,955	2,727
Folio Sponsorship	20,000	–
Fee for Service		
Consulting Management Fees	333,786	314,446
Membership Services Management Fees	43,918	61,000
Project Income	743,873	360,491
Event Registration Fees	4,713	610
Studio Rentals	203,600	209,963
Membership		
Artsource ACCESS Membership	19,609	19,873
Artsource PLUS Membership	28,182	26,893
Artsource MAX Membership	95,346	100,392
Artsource ASSOCIATES	9,518	10,491
Sundry		
	15,120	27,398
Total Income		
	2,030,571	1,889,522

EXPENSES	2015 \$	2014 \$
Overhead Expenses		
Governance & Administration	77,536	60,190
Consumables & Resources	26,545	31,377
Communications	36,562	33,380
Marketing	28,896	60,638
Travel & Accommodation	11,506	17,586
Salaries & On-Costs	821,934	816,476
Program Expenses		
Administration & Management Fees	38,718	61,000
Artist Fees & Commissions	678,197	303,258
Project Outgoings	77,403	59,197
Grant Payments to Artists	36,073	66,073
Insurance – Max Membership	28,488	29,327
Membership Project Outgoings	–	12,708
Studio Rents & Consumables	152,372	177,367
Travel & Accommodation	13,971	18,772
Special Projects	–	139,772
Total Expenditure		
	2,028,201	1,887,121
Net Profit/(Loss)		
	2,370	2,401

Balance Sheet 2015

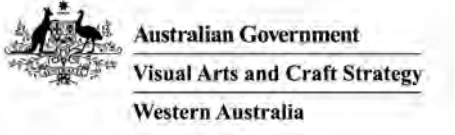
	2015 \$	2014 \$
Assets		
Bank Accounts	205,415	267,943
Bond Paid	5,300	5,500
Prepayments	39,268	16,201
Rent on Premises Prepaid	3,584	13,014
Accrued Interest Earnings	965	965
Accrued Income Earned	20,822	26,324
Trade Debtors	239,288	218,465
Fixed Assets		
Artwork Collection	10,000	10,000
Equipment at Cost	219,151	210,821
Accumulated Depreciation Equipment	(195,340)	(175,854)
Software at Cost	94,076	82,549
Accumulated Depreciation Software	(70,243)	(54,471)
Furniture & Fittings at Cost	50,535	43,473
Accumulated Depreciation Furniture & Fittings	(42,347)	(41,232)
Total Fixed Assets	65,832	75,286
Total Assets	580,474	623,698
Liabilities		
Current Liabilities		
Trade Creditors	34,522	11,695
Credit Cards	2,700	4,505
Donations to be Allocated	6,855	6,855
Grants in Advance	202,332	139,432
Consulting outgoings received in advance	145,218	264,196
Studio rent received in advance	13,115	14,794
Accrued salary & other expenses	9,816	7,000
GST Liability	41,149	22,141
Payroll Liabilities	12,166	35,205
Employee Provisions	29,482	37,126
Total Liabilities	497,355	542,949
Net Assets	83,119	80,749
Members Funds 2015		
Retained Earnings	80,749	78,347
Current Earnings	2,370	2,402
Total Equity	83,119	80,749

Full audit report available on request.

Thank You

We gratefully acknowledge the support of our funders, sponsors, partners and patrons who work with us to deliver essential services and activities for our Members.

Primary Funding



Regional + Indigenous Development Program



Project Funding



Studios + Residencies



Venue Partner



Corporate Patrons



Events Sponsors



Community Donors

Collector's Club and the Constantine Family Foundation

2015 Patrons

Anonymous (4)	Beth + Howard Croxon	Kyle Jeavons	Bob Poolman
Jo Bennett	Mal + Gwen Di Giulio	Dr Andrew Lu OAM + Dr Geoffrey Lancaster AM	Carlo Scali
Mark Bertinshaw	Mario D'Orazio		Sarah Seymour
Gavin Buckley + Rob Lines	Adrian + Michela Fini	Simone McGurk MLA	Glenn Whiddon
Joe Chindarsi	Natasha + Robert French	Andreas Merk	Kieran Wong + Emma Williamson
Holly Constantine	Miik Green	Tabitha Minns	Mark + Madelaine Zed
James Constantine	Anthony + Kellie Hasluck	Norah Ohrt	Nichola Zed
Aaron Constantine	Yvonne Holland	Nic Osboine + Luke Parker	
Frank Cooper	Eric + Lyn Holland	Richard Petrusma	
Sue Croudace	Judith Hugo	Dino Penaranda	

Our Current Team

Gavin Buckley

Chief Executive Officer

Kate Roberts

Head of Membership Services

Jane King

Head of Membership Development

Sabina Moncrieff

Finance Manager

Ron Bradfield Jnr

Membership Manager

Loretta Martella

Studios + Residencies Manager

Paul Parin

Art Consultant

Regula Huber

Art Consultant (to June 2016)

Katherine Wilkinson

Art Consultant

Sara Walker

Development Officer

Sue-Lyn Aldrian-Moyle

Marketing Officer

Anna Richardson

Membership + Administration Coordinator

Annika Aitken

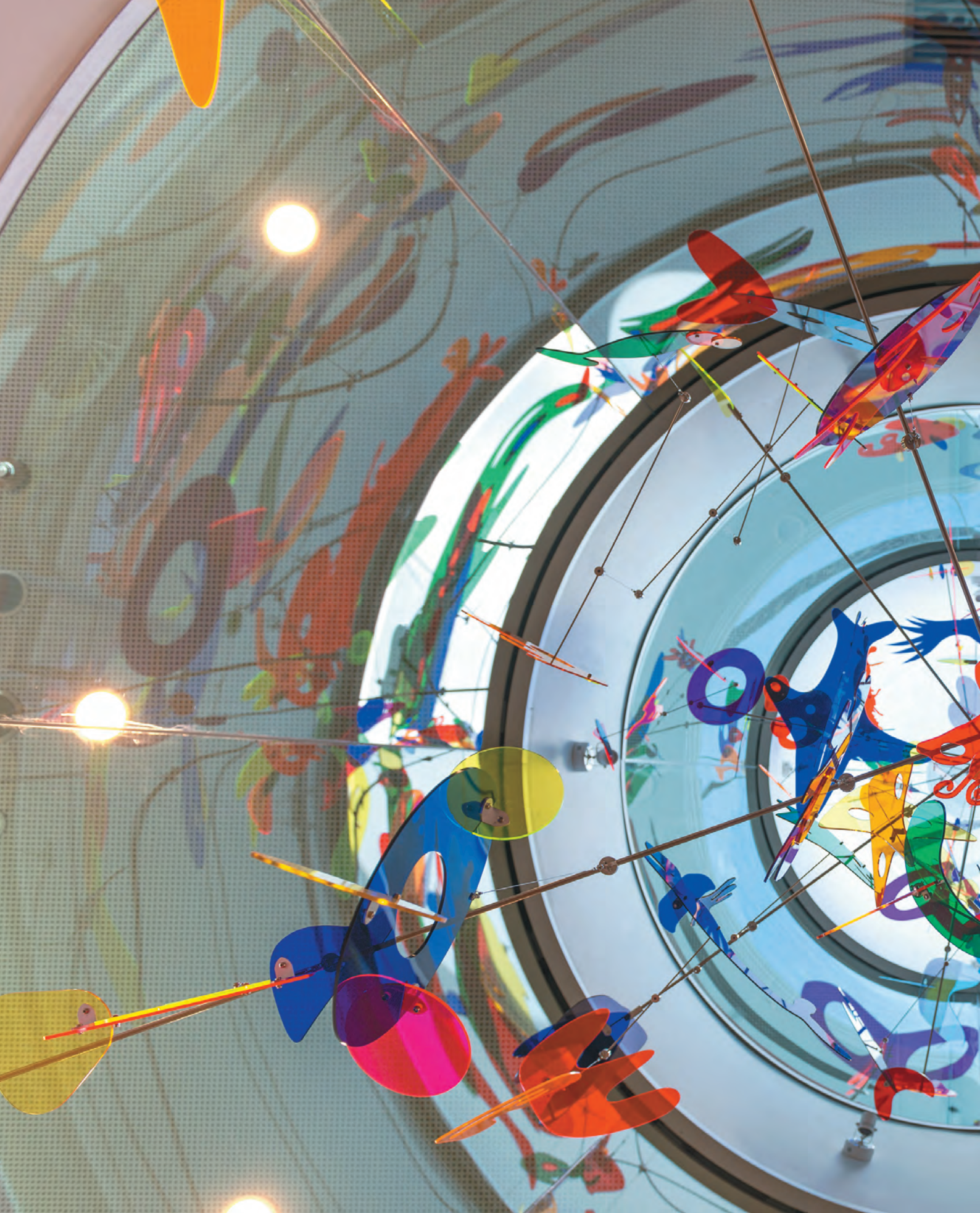
Development + Finance Coordinator

Mary Peck

Membership Administration Assistant

Artsource Members + Associates 2015

ACCESS Carla Adams, Kadri Alekand, Tamara Alexander, May Ali, Danielle Andree, Tane Andrews, Paola Anselmi, Armadale Society of Artists Inc, David Attwood, Janice Axe, Christine Baker, Jacqueline Ball, Rose Barrett, Jane Barwell, Bassendean Arts Council Inc., Tessa Beale, Mary Bendall, Bello Benischauer, Karlee Bertola, Lyn Bindley, Diane Binns, Alisa Bokenry, Kerri Boase-Jelinek, Lynne Boladeras, Mutsuko Bonnardeaux, Ashley Bonser, Daniel Bourke, Michelle Bourne, Bruce Bradfield, Ben Brennan, Pamela Brittain, Kristen Brownfield, Gail Brownley, Deidre Bruhn, Karina Buckingham, Valdene Buckley, Betsy Bush, Shannon Calcott, Alira Callaghan, S Callow, Robyn Camerer, Anna Campbell, Danielle Campbell, Deborah Campbell, Hayley Campbell, Cannery Arts Centre, Mary Carbone, Andrea Carew-Reid, Ceramic Arts Association of WA, Peter Cheng, Audrey Chey, Tiziana Chilcott, Martin Chruchill, Chubby, Yvonne Cilia, Trudy Classens, Rachel Coad, Erin Coates, Joshua Cocking, Anna Cocks, Fiona Collett, Sujora Conrad, Bronwyn Constance, Catherine Cook, Deb Cooper, Rebecca Corps, Carmela Corvaia, Shelley Cowper, Catherine Cresswell, Kerry Cullinan, Mandy Curtis, Catherine Czerw, Ross Daglish, Jerome Davenport, Jodie Davidson, Christina Davies, Digby de Bruin, Estelle Dean, Iain Dean, Nola Demuth, Clare Detchon, Giovanni Di Dio, Mal Di Giulio, Lyn DiCiero, Louise Dickmann, Karen Dickson, Angela Diletti, Melanie Diss, Caitlin Dominey, Dominique, Robert Dorizzi, Graham Douglas-Meyer, Sophie Durand, Jasmine Edwards, Elisabeth Eitelberger, Eleonora, Sarah Elson, Leanne Emmitt, Anne Errey, Jonnine Evans, Alisha Falconer, Silvana Ferrario, De Fernier, Tania Ferrier, Robin Jane Fingher, Marita Finnegan, Chris Fitzpatrick, Kate Floyd, Franco Fogliani, Luci Foresti, Milly Formby, David Forrest, Julie Fowell, Mace Francis, Karen Frankel, Tom Freeman, Christiana Gagliano, Tjukurba Gallery, Jenn Garland, Drewfus Gates, Teelah George, Jillian Gibbney, Michelle Gilks, Tarryn Gill, Peta Gillingham, Lorelee Gobetti, Liesbeth Goedhart, Kym Gow, Lisa Green, Emma Greene, Jane Grierson, Lucy Griggs, Libby Guj, Jane Hamilton, Marilyn Hamilton, Frances Hammond, hansdieter, Sally Harding, Fiona Harman, Mal Harry, Gregor Hart, Tracey Hart, HARTZ (Hedland Arts Council), Anthony Hasluck, Susan Hauri-Downing, Caroline Healy, Thomas Heidt, Julie Hein, Franci Hepburn, Cheryl Hepple, Gigi Hesterman, Nigel Hewitt, Krystal Hickman, Digby Hill, Jennifer Hill, Ginette Hillman, Stephanie Holt, Christopher Hopewell, Sue Howard, Susan Hoy, Annie Hsiaou-Wen, Harry Hummerston, Jodie Hunt, Patrick Hyde, Vera Ioannidi, Jessica Ipkendanz, Adam Ismail, Michael Iwanoff, Marie Jacquier, Jaegerie, Sally Jarvis, Simone Johnston, Kate Jones, Natalia Kaighin, Sue Kalab, Janet Kauler, Corenea Kelly, Joel David Kennedy, Kim Kim Kim, Rhoda Kirk, Megan Kirwan-Ward, Junko Kitamura, Catherine Knox, Francis Koenig, Theo Koning, Mel Lamanna, Jennifer Laurie, Laverton Leonora Cross Cultural Association, Selina Suk Kyung Lee , Sue Leeming, Thomas Lee-Steere, Amy Lesuma, Andre Lipscombe, Tim Little, Marijke Loosjes, Camilla Loveridge, Carly Lynch, Shannon Lyons, Alex Maciver, Barbara Madden, Nick Mahony, Michelle Maliepaard, Fleur Marron, Elizabeth Marruffo, Herbert Marshall, Lucille Martin, Gale Mason, Minaxi May, Annemie McCauliffe, Clare McCarthy, Graeme McCullagh, Clyde McGill, Christina McGuinness, Barry McGuire, John McKell, Jason McLeod, Tabitha McMullan, Alana McVeigh, Marian Medd, Federico Medina, Annie O Medley, Jenelle Melville, Simona Milea, Karen Millar, Kale Miller, Mark Miragliotta, Gregg Mitchell, Myra Mitchell, He Molly, Jacqui Monks, Belinda Morris, Julia Morris, Karin Morris, Toogarr Morrison, Rosemary Mostyn, Alan Muller, Norah Murphy, Brett Nannup, Giselle Natassia, Janis Nedela, Bernadette Neeling, Kathleen Neeling, Kerry Nelson, Sarah Nelson, Bronwen Newbury, Mandy Mai Yung Ng, Andrew Nicholls, Chris Nixon, Lyn Nixon, Deidre Noon, Annette Nykiel, Shayne O'Donnell, Soyo O'Keefe, Holly O'Meehan, Jill O'Meehan, Michelle Lee O'Neil, Rizzy Ottey, Kerry Paddon, Max Pam, Mark Parfitt, Kate Parker, Rory (Dax) Paton, Louise Paul, Cynthia Payne, Clare Peake, Anne Maree Pelusey Zentner, Dallas Perry, Janet Pfeiffer, Robyn Pickering, Rosie Moana Pickett, Teresa Pirovich, Chris Poole, Julian Poon, Printmakers Assoc. of WA, Keir Ralph, Berenice Rarig, Caitlin Rash, Marc Raynaud, Holly Razari, Bruce Reid, Rachel Reinert, Joanne Richardson, Sylvie Riches, Rosemary Roe, Roebourne Art Group, Stef Rogerson, Patricia Rose-Smith, Alistair Rowe, Bec Rule, Vanessa Russ, Jane Ryan, Harrison Sadler, Michelle Saleeba, Rachel Salmon-Lomas, Andrew Salter, Dipak Sarkar, Katherine Scarff, Rory Schmitz, Maja Liisa Schneider, Megan Sears, Annie Shelley, Emily Shingleton, Mariyon Slany, Lesley Smailes, Ruby Smedley, Helen Smith, Uta Sommer, Amelia Sonnekus, Ric Spencer, Caroline Staron, Stocky, Elizabeth Strauss, Criss Sullivan, SURFACE 122, Melanie Talbot, Jessica Tan, Leah Tarlo, Nic Tascone, Lance Taylor, Clare Testoni, Kati Thamo, Annette Thas, The Jewellers & Metalsmiths Group of WA, The Watercolour Society of WA, Casey Thornton, Michelle Lee Tindale, Marisa Tindall, Marzena Topka, Geereesha Torul, Chloe Tupper, Mark Tweedie, Enid Twiglet, Cecilia Ulfodt, Corine van Hall, Martien van Zuielen, Elanie Van Zyl, Gwen Velge, Rachel Verheggen, Cat Vernon, Trevor Vickers, Lynnette Voevodin, WA Fibre and Textile Association, Rae Walter, Jillian Warnock, Liez Watermeyer-Collins, Janice Watkins, Sonia Wee, Louise Wells, Katie West, Lisa White, Jane Whiteley, Danica Wichterernann, Amanda Williams, Cecile Williams, Maureen Wilson, Norman Wilson, Sally Wilson, Simon Wilson, Wits End Studio, Deborah Worthy, Warren Wright, Arron Yarran, Yinjaa Barni Art Centre, Holly Yoshida, Nick Zafir, Olga Zoltowski, Peter Zuvela. **PLUS** Amanda Alderson, Monia Allegre, Russell Anderson, Darryn Ansted, Liz Arnold, Zora Avila, Carole Ayres, David Bailey, Max Ball, Corinne Barton, Jennifer K Bay, Merrick Belyea, Monique Bosshard Curby, Lisa Bowden, Elaine Bradley, David Brophy, Jill Bryant, Hilary Buckland, Jude Bunn, Kate Campbell-Pope, Paul Caporn, Barbara Chapman, Jacky Cheng, Peter Ciemitis, Madeline Clare, Laurie Cochrane, Richard Coldicutt, Renae Coles, Thea Costantino, Di Cubitt, Helen Curtis, Bob Davis, Jess Day, Christian de Vietri, Stephen Delaney, Adam Derums, Margaret Dillon, Ian Dixon, Michael Doherty, Paul Donnachie, Shaaron Du Bignon, Pilar Mata Dupont, Marisa Dyer, Vern Edwards, Louise Elscot, Marcia Espinosa, Rob Forlani, Penelope Forlano, Lyn Franke, Rina Franz, Christopher Fulham, Miriam Gardiner, Simon Gauntlett, David Giles, Dan Gladden, Francesca Gnagnarella, Roger Goodman, Holly Grace, Joss Gregson, Mark Grey-Smith, Jillian Grimbeek, Richard Gunning, Sandra Hall, Lindsay Harris, Laura Heffernan, Penny Herbert, Jordy Hewitt, Mark Hewson, Maria Hildrick, Joan Hillman, Patricia Hines, Jason Hirst, Thomas Hoareau, Kirsten Hocking, Therese Howard, Nathan Hoyle, Penny Hudson, Amanda Humphries, Garry Hyde, Tanya Jacaglav, Ren Javovich, Shana Jones, Ramona Janssen, Yanni Johns, Paul Johnson, Greg Johnston, Magda Joubert, Bernhard Kaiser, Paul Kaptein, Alison Kidd, Martin Kidd, Ida Killigrew, Sharleen King, Mary Knott, Krocette, Guundie Kuchling, Jillian Kurz, Ronan Lane, Warren Langley, Rebecca Anne Lee, Louise Lodge, Marin Lommerse, Kirsty Low, Laszlo Lukacs, Louise Macfie, Kim Maple, Elisa Markes-Young, Elwyn Marren, Amanda Marsh, Rick Martin, Jarrod Martyn, Gayle Mason, Gabrielle Mazalevskis, Mic McAllister, Kevin McCabe, Robert McCulloch, John McIntosh, Jane McKay, Nina McKay, Lia McKnight, David McLeish, Sarah McNamara, Katharina Meister, Elizabeth Mendoza, Peta Miller, Stormie Mills, Mills Record Bar, Laura Mitchell, Genevieve Montgomerie, Tanya Montgomery, Rebecca Morgan-Finch, Tom Muller, Lesley Munro, Michael Vincent Murphy, Laurel Nannup, Daniel Nevin, Jack Pam, Malini Parker, Jill Parnell, Jean Pastore, June Pastore, Marianne Penberthy, Leon Pericles, Felicity Peters, Connie Pettrillo, Ross Plowright, Cindy Poole, Rosy Poysier, Gregory Pryor, Jeannette Rein, Fran Rhodes, Valma Rhodes, Brad Rimmer, Cyrus Roussilhes, Carol Rowling, S.Azar, Gay Saunders, Deborah Savage-Cooper, Stephen Schulz, Nien Schwarz, Prina Shah, Shakey, Jessica Sipes, Felicity Siewright, Roly Skender, Anne Sorensen, Tania Spencer, Alex Spremberg, Roderick Sprigg, Liliana Stafford, Ralph Stanton, Neda Starac, Angela Stenton, Angela Stewart, Sally Stewart, Sally Stoneman, John Stribling, Joyce Syms, Sioux Tempest, Emily ten Raa, James Tinsley, Neil Turner, Michael Vandeleur, Andrea Vinkovic, Jana Vodesil-Baruffi, Nicole Voevodin-Cash, Sara Walker, Karin Wallace, Vanessa Wallace, Robin Warren, Jo Wassell, Audrey Welch, Mardi West, Ian Williams, Laura Williams, Pauline Williams, Michael Wise, Gera Woltjer, Tessa Wyldie, Jill Yelland, Clarice Yuen, Garry Zeck, Jan Zeck. **MAX** Abdul-Rahman Abdullah, Bjoern Rainer Adamson, Addam, Gary Aitken, Crispin Akerman, Sue-Lyn Aldrian-Moyle, Ali J, Kathy Allam, Ayad Alqargholi, Nick Altham, Gaea Anastas, Jennifer Anderson, Judith Ann, Jill Ansell, Richard Argent, Kerrie Argent, Sohan Ariel Hayes, Stephen Arniststead, Eve Arnold, Greg Ash, Thomas (Brian) Aylward, Hayley Bahr, Claire Bailey, Michael "Shine" Barker, Peter Barker, Lesley Barrett, Renee Barton, Rebecca Baumann, Maggie Baxter, Jacinda Bayne, Claire Beausein, Sebastian Befumo, Toby Bell, Ian Beniston, Yolande Bennett, Corinne Berset-Meadmore, Vaughn Bisschops, Kirsten Biven, Sandra Black, Kat Black (VIZOO), Anton Blume, Trevor Bly, Helen Bodycoat, Deborah Bonar, Penny Bovsik, Stephanie Boyle, Barbara Boszik, Leanne Bray, Lucy Bromell, Shelley Brookland, Lauren Brown, Denise V Brown, Tim Burns, Kingsley Burton, Claire Bushby, Damien Butler, Trish Bygott, Robert C Hitchcock, Turid Calgaret, Christophe Canato, Ryan Cant, Pierre Capponi, Nicholas Carras, Susanna Castleden, Mikaela Castledine, Lance Chadd, Sheryl Chant, Calvin Chee, Megan Christie, Jillian Ciemitis, Olga Cronis, Celia Clare, Helen Clarke, Elaine Clocherty, Joshua Cobb-Diamond, Jennifer Cochrane, Sue Codee, Louise Collier, Nic Compton, Peter Cook, Jasper Cook (VIZOO), Debra Corbett, Penny Coss, Holly Courtney, Diana Creed, Lucinda Crimson, Paula Cristoffanini, Andrew Cross, John Cullinane, Nadia Cullinane, Drago Dadich, Peter Dailey, Brendon Darby, Jo Darbyshire, Jo Darvall, Mark Datodi, Claire Davenhall, Angela Davis, Annette Davis, April Davison, Jenny Dawson, Nathan Day, Jenny de Bruyn, Tom de Munk-Kerkmeier, Ian de Souza, Ruth de Vos, Liam Dee, Jon Denaro, Sue Dennis, Maryann Devereux, Matt Dickmann, Hilda Dixon, Pat Dixon, Daniela Dlugocz, George Domahidy, Pascal Dombis, Isis Dorado, Barbara Douglas, Ian Dowling, Geoffrey Drake-Brockman, Kevin Draper, Stephen Draper, Kevin Duffy, Dan Duggan, Anna Duggan, Stephany Durack, Lisa Dymond, Stephen Egan, Sharyn Egan, William Eicholtz, Neil Elliott, Stuart Elliott, Maureen Elphick, Robert Ewing, Jennifer Eyles, Marwa Fahmy, Caspar Fairhall, Marcella Faithfull, Hannah Fairleigh, Peter Farmer, Gail Marie Farquhar, Francis Farquharson, Meleah Farrell, John Farrington, Eva Fernández, Fieldley, Susan Flavell, Anna Foley, Judith Forrest, Richard Foulds, Namaya Fox, Andrew Frazer, Miranda Free, Richard Fry, Maxine Gadd, Dawn Gamblen, Philip Gamblen, John Garde, Rod Garlett, Fiona Gavino, Anne Gee, Indra Geidans, Stephen Genovese, Samala Ghosh, Jay Gibson, Simon Gilby, Marian Giles, Sue Girak, Shaun Gladwell, Valerie Glover, Inta Goddard, Catherine Gordon, Ayako Goto, Peter Graham, Lorena Grant, Naomi Grant, Miik Green, Stuart Green, Geoff Green-Armytage, Jose Greenhill, John Grono, Ruth Halbert, Hena hald, Lawrence Halden, Beba Hall, Blandine Hallé, Noleen Hamlett, Marie Hammat, Richard Hammer, Nidia Hansen, Matthew Harding, Sam Harris, Lee Harrop, Paula Hart, Tracey Harvey, Graham Hay, Wendy Hayden, Delrene Hemingway, Ken Hill, Sandra Hill, Jackie Hoeksema, Rose Holdaway, Jonathan Holding, Jeremy Holton, Bev Honey, Nathan Hopkins, Nick Horn, Lewis Horne, Michelle Horrocks, Nalda Hoskins, Pablo Hughes, Kyle Hughes-Odgers, Helen Hulme-Gerrard, Si Hummerston, Darren Hutchens, Celestin Hutchinson, Eric Hynynen, Bev Iles, Daniel Iley, Veronica (Bonni) Ingram, Brad Jackson, Simon James, Candice Jee, Adrian Jones, Ben Jones, Buffy Jones, Nancy Jones, Tony Jones, Louise Josephs, Belinda Joyne, Jessica Jubb, Marina Kallis, Andrew Kay, Peter Keelan, Christopher Keen, Tim Kevill, David Kenworthy, Beth Kirkland, Jeremy Kirwan-Ward, Katelyn Kitching, Michael Knight, Peter Knight, Kimberley Kohan, Kate Koivisto Wheeler, Anastasija Komarnyckyj, Eveline Kotai, Judy Kotai, Ben Kovacs, Voytek Kozlowski, Richie Kuhaupot, Brad Ladyman, Joanna Lamb, Pam Langdon, Emma Lashmar, Vania Lawson, Nigel Laxton, Jonathan Leahay, Malcolm Leckie, David Ledger, Jina Lee, Angela Leech, Joanna Lefroy Capelle, Amanda Lin, Emma Lipscombe, Vanessa Lombardo, Gunter Lorenz, Gemma Lori, Nadeen Lovell, Honor Lovis, Felicia Lowe, Coral Lowry, Wendy Lugg, Trevor Lundstrom, Norma MacDonald, Tim MacFarlane Reid, Melanie Maclou, Penelope Maddison, John Maloney, John Manson, Caroline Marinovich, (Siem) Chad Marwick, Jason Maxlow, Christopher McBride, Anne McCaughey, Chris McClelland, Chris McDonald, Carrie McDowell, Clare McFarlane, Caroline McGregor, Angela McHarrie, Sandy McGregor, James McLean, Pippa McVee, Matthew McVeigh, Nicola Anne McWhirter, Lesley Meaney, Lyn Merrington, Belinda Mettam, Alex Mickle, Nicole Mickle, Britt Mikkelsen, Sarah Mikula, Susan Milne, Vanessa Jean Milner, Dragica Milunovic, Gordon Mitchell, Jessie Mitchell, Monsters as Friends (Steve Browne), Mary Moore, Antony Muia, Ian Mullen, Elisabeth Mulrooney, Nady Murphy, Ian Mutch, Paul Nagle, Jennie Nayton, Anne Neil, Dorothy Newland, Patricia Newman-Bruton, Yvonne Nietrzeba, Bridget Norton, Ron Nysiztor, Michael O'Doherty, Debbie Oakley, Linda O'Brien, Philippa O'Brien, Lucy O'Dea, Sandra O'Doherty, Helene Offer, Margie Oldfield, Stella Onderwater, Cynthia Orr, Nami Osaki, Irene Osborne, Charlotte O'Shea, Kristine Ostermeyer, Graeme Pages-Oliver, Ariane Palassis, Tony Pankiw, Xavier Pardos, Spencer Parks, Chrissie Parrott, Julie Parsons, John Pasco, Lisa Payton, Chad Peacock, Sarah Pearn, Lisa Pensabene, Denise Pepper, Holly Pepper, Pavel Perina, Perdita Phillips, Shelley Piang-Nee, Terri Pikora, Jan Pittman, Trudi Pollard, Simon Poole, Richard Potter, Pascal Proteau, Andy Quilty, Nat Rad, Susan Radaich, Deborah Ralph-Kafarela, Michelle Ranieri, Corrine Rapley, Mehdi Rasulle, Maris Raudzins, Roger Reading, Jahne Rees, Lance Reid, reSPOKE, Ben Reynolds, Trevor Richards, Anna Louise Richardson, Eileen Richardson, Jade Riggins, Jean Marc Rivalland, Lyn Robinson, Cy Rocchi, Judy Rogers, Angela Rossen, Alessandra Rossi, Susan Roux, Jan Rowe, Vicki Royans, Elizabeth Royce, Jennifer Sadler, Helena Sahn, Britt Salt, Olivia Samec, Jenny Sanderson, Arif Satar, Audrey Satar, Carmel Sayer, Stewart Scambler, Danka Scholtz von Lorenz, Emma Schrader, Tanya Schultz, Tessa Joy Schulz, Ken Sealey, Harrison See, Helen Seiver, Betty Setzinger, Stephanie Stacey, Adam Stanley, Yolanda Stapleton, Sue Starcken, Sheryl Stephens, Greg Stonehouse, Holly Story, Drew Straker, Andrew Stumpf, Joanna Sulkowski, Julia Sutton, Yuko Takahashi, Jon Tarry, Dianne Taylor, Glen Taylor, Gregory Taylor, Steve Tepper, Michele Theunissen, Belinda Tibay, Monique Tippet, Sandy Tippet, Sarah Toohey, Linda Ullrich-Horko, Brendan Van Hek, Luke Verhelst, Rick Verney, Joie Villeneuve, Rosalie Vinicombe, Joanna Wakefield, Jana Wallace-Braddock, Pen Walsh, Don Walters, Lance Ward, Carmel Warner, Bridget Waters, Margot Watkins, Chris Watson, Anna Watts, Joshua Webb, Justin Webb, Elliot Welsford, Hayley Welsh, Mark Welsh, Rebecca Westlund, Kath Wheatley, Pauline White, Frances Whitehead, Margot Wiburd, Sarah Wilkinson, Russell Williams, Natalie Williamson, Richard Williamson, Judith Willis, Gillian Willmer, Gillian Wilson, Tony Windberg, Jurek Wybraniec, Robin Yakinthou, Alistar Yap, Christopher Young, Peter Zappa, Len Zuks. **LIFE** Ben Joel, Bob Poolman, George Haynes, Graeme Rowley, Hans Arkeveld, Jude van der Merwe, Nalda Searles, Norah Ohrt, Pippin Drysdale, Violet Pickett. **ASSOCIATE** Applecross Senior High School, Armature Design Support P/L/Trent Baker, Art Gallery of Western Australia, ART ON THE MOVE, Arterial Design, Ausdance, Alison Barrett, Jenny Beahan, Bizicuz, Boddington Shire Council, Bonking Frog Workshop, David Bromfield, Liz Cartell, Central Institute of Technology, Frederick Chaney, Child and Adolescent Health Service, Christ Church Grammar School, City of Armadale, City of Bayswater, City of Bunbury, City of Busselton, City of Cannning, City of Cockburn, City of Fremantle, City of Gosnells, City of Joondalup, City of Kalgoorlie-Boulder, City of Karratha, City of Mandurah, City of Nedlands, City of Perth, City of Rockingham, City of South Perth, City of Stirling, City of Wanneroo, Belinda Cobby, Community Arts Network WA, Country Arts WA, DADAA, Sabrina Dowling-Cockie, Ellenbrook Arts, Fremantle Arts Centre (FAC), Fremantle Ports, Fremantle Prison, Gascoyne Arts Council, Ainslie Gatt, Guildford Grammar School Inc., Ole Hansen, Headus (Metamorphosis) Pty Ltd, Heathcote Museum + Gallery, Housing Authority, Joondalup Art Gallery, Kidogo Art House, Kimberley Training Institute, Victoria Laurie, Light Application Pty Ltd, Lighting Options Australia, Linton and Kay Galleries, Lux Events, Mackay Urban Design, Catherine McDonald, Merenda Fine Art Gallery, Mundaring Arts Centre, Sandra Murray, Open Architecture, Penrhos College, Perth College, Propel Youth Arts WA, Scoop Publishing, Shire of Broome, Shire of Carnarvon, Shire of Exmouth, Paula Silbert, Southern River College, Spaced, Spectrum Project Space, St Hildas Anglican School for Girls, St Mary's Anglican Girls' School, St Vincent De Paul Society, The WA Circus School, Tim Davies Landscaping, Town of Cambridge, Town of Claremont, Tradition Stained Glass, Tresillian Centre, Urban Design and Landscape Architecture, Writing WA.



8 Phillimore Street, Fremantle WA 6160
PO Box 999, Fremantle WA 6959

T +61 8 9335 8366
F +61 8 9335 3886

info@artsource.net.au
artsource.net.au